



[Go to Product page](#)

Datasheet for ABIN7238603

anti-NEK5 antibody

2 Images

Overview

| | |
|--------------|-------------------------------------|
| Quantity: | 200 µL |
| Target: | NEK5 |
| Reactivity: | Human |
| Host: | Rabbit |
| Clonality: | Polyclonal |
| Conjugate: | This NEK5 antibody is un-conjugated |
| Application: | ELISA, Immunohistochemistry (IHC) |

Product Details

| | |
|------------------|---------------------------------|
| Immunogen: | Synthetic peptide of human NEK5 |
| Isotype: | IgG |
| Characteristics: | Polyclonal Antibody |
| Purification: | Affinity purification |

Target Details

| | |
|-------------------|--|
| Target: | NEK5 |
| Alternative Name: | NEK5 (NEK5 Products) |
| Background: | Nek5 (NimA-related protein kinase 5) is a 708 amino acid protein that is related to NIMA, a protein that was originally discovered in <i>Aspergillus nidulans</i> and is necessary for entry into mitosis. One of several members of the Set/Thr protein kinase super family, Nek5 contains one protein kinase domain through which it catalyzes the ATP-dependent phosphorylation of target |

Target Details

proteins. Like NIMA, Nek5 may be involved in mitotic regulation and cell cycle control.

NCBI Accession: [NP_954983](#)

UniProt: [Q6P3R8](#)

Pathways: [Regulation of Actin Filament Polymerization](#)

Application Details

Application Notes: IHC 1:50-1:200

Restrictions: For Research Use only

Handling

Format: Liquid

Concentration: 0.5 mg/mL

Buffer: PBS with 0.05 % sodium azide and 50 % glycerol, PH7.4

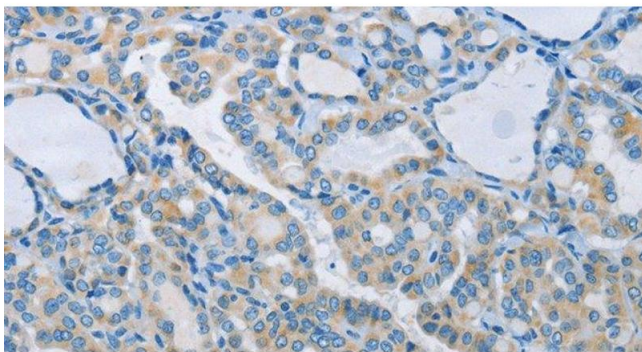
Preservative: Sodium azide

Precaution of Use: This product contains Sodium azide: a POISONOUS AND HAZARDOUS SUBSTANCE which should be handled by trained staff only.

Storage: -20 °C

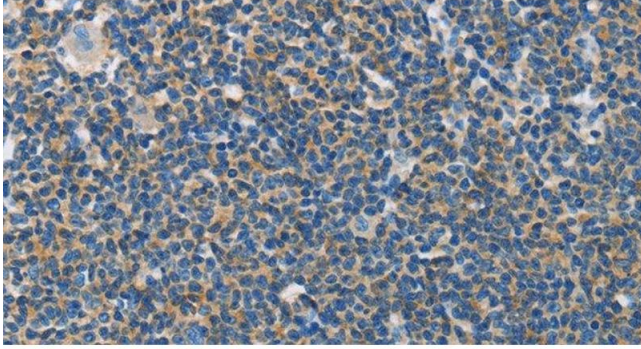
Storage Comment: Store at -20°C. Avoid freeze / thaw cycles.

Images



Immunohistochemistry (Paraffin-embedded Sections)

Image 1. Immunohistochemistry of paraffin-embedded Human thyroid cancer tissue using NEK5 Polyclonal Antibody at dilution 1:60



Immunohistochemistry (Paraffin-embedded Sections)

Image 2. Immunohistochemistry of paraffin-embedded Human lymphoma tissue using NEK5 Polyclonal Antibody at dilution 1:60