

Datasheet for ABIN7238621

anti-PDE6C antibody[Go to Product page](#)**1** Image

Overview

Quantity:	200 µL
Target:	PDE6C
Reactivity:	Human
Host:	Rabbit
Clonality:	Polyclonal
Conjugate:	This PDE6C antibody is un-conjugated
Application:	ELISA, Western Blotting (WB)

Product Details

Immunogen:	Synthetic peptide of human PDE6C
Isotype:	IgG
Characteristics:	Polyclonal Antibody
Purification:	Affinity purification

Target Details

Target:	PDE6C
Alternative Name:	PDE6C (PDE6C Products)
Background:	Cone cGMP-specific 3',5'-cyclic phosphodiesterase subunit alpha' is an enzyme that in humans is encoded by the PDE6C gene. This gene encodes the alpha-prime subunit of cone phosphodiesterase, which is composed of a homodimer of two alpha-prime subunits and 3 smaller proteins of 11, 13, and 15 kDa. Mutations in this gene are associated with cone

Target Details

	dystrophy type 4 (COD4).
Molecular Weight:	99 kDa
NCBI Accession:	NP_006195
UniProt:	P51160

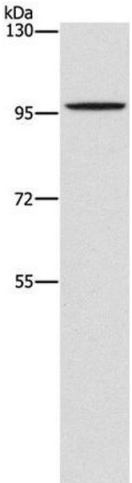
Application Details

Application Notes:	WB 1:500-1:2000
Restrictions:	For Research Use only

Handling

Format:	Liquid
Concentration:	1.1 mg/mL
Buffer:	PBS with 0.05 % sodium azide and 50 % glycerol, PH7.4
Preservative:	Sodium azide
Precaution of Use:	This product contains Sodium azide: a POISONOUS AND HAZARDOUS SUBSTANCE which should be handled by trained staff only.
Storage:	-20 °C
Storage Comment:	Store at -20°C. Avoid freeze / thaw cycles.

Images



Western Blotting

Image 1. Western Blot analysis of A172 cell using PDE6C Polyclonal Antibody at dilution of 1:1400