

Datasheet for ABIN7238642

**anti-Asporin antibody****2** Images[Go to Product page](#)

## Overview

Quantity:	200 µL
Target:	Asporin (ASPN)
Reactivity:	Human, Mouse
Host:	Rabbit
Clonality:	Polyclonal
Conjugate:	This Asporin antibody is un-conjugated
Application:	Western Blotting (WB), Immunohistochemistry (IHC), ELISA

## Product Details

Immunogen:	Synthetic peptide of human ASPN
Isotype:	IgG
Characteristics:	Polyclonal Antibody
Purification:	Affinity purification

## Target Details

Target:	Asporin (ASPN)
Alternative Name:	ASPN ( <a href="#">ASPN Products</a> )
Background:	This gene encodes a cartilage extracellular protein that is member of the small leucine-rich proteoglycan family. The encoded protein may regulate chondrogenesis by inhibiting transforming growth factor-beta 1-induced gene expression in cartilage. This protein also binds collagen and calcium and may induce collagen mineralization. Polymorphisms in the aspartic

## Target Details

acid repeat region of this gene are associated with a susceptibility to osteoarthritis. Alternate splicing results in multiple transcript variants.

Molecular Weight: 43 kDa

NCBI Accession: [NP\\_001180264](#)

UniProt: [Q9BXN1](#)

## Application Details

Application Notes: WB 1:500-1:2000 IHC 1:50-200

Restrictions: For Research Use only

## Handling

Format: Liquid

Concentration: 0.6 mg/mL

Buffer: PBS with 0.05 % sodium azide and 50 % glycerol, PH7.4

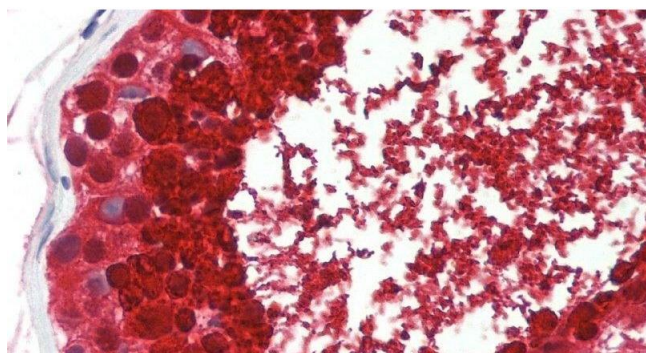
Preservative: Sodium azide

Precaution of Use: This product contains Sodium azide: a POISONOUS AND HAZARDOUS SUBSTANCE which should be handled by trained staff only.

Storage: -20 °C

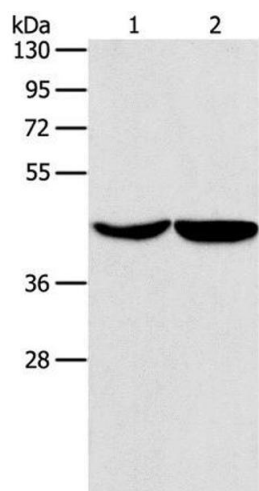
Storage Comment: Store at -20°C. Avoid freeze / thaw cycles.

## Images



### Immunohistochemistry (Paraffin-embedded Sections)

**Image 1.** Immunohistochemistry of paraffin-embedded Testis tissue using ASPN Polyclonal Antibody at dilution of 1:60 .



Western Blotting

**Image 2.** Western Blot analysis of Hela and hepG2 cell using ASPN Polyclonal Antibody at dilution of 1:550