

Datasheet for ABIN7238648
anti-Caveolin 3 antibody

3 Images

[Go to Product page](#)

Overview

Quantity:	200 µL
Target:	Caveolin 3 (CAV3)
Reactivity:	Human
Host:	Rabbit
Clonality:	Polyclonal
Conjugate:	This Caveolin 3 antibody is un-conjugated
Application:	Western Blotting (WB), Immunohistochemistry (IHC), ELISA

Product Details

Immunogen:	Synthetic peptide of human CAV3
Isotype:	IgG
Characteristics:	Polyclonal Antibody
Purification:	Affinity purification

Target Details

Target:	Caveolin 3 (CAV3)
Alternative Name:	CAV3 (CAV3 Products)
Background:	This gene encodes a caveolin family member, which functions as a component of the caveolae plasma membranes found in most cell types. Caveolin proteins are proposed to be scaffolding proteins for organizing and concentrating certain caveolin-interacting molecules. Mutations identified in this gene lead to interference with protein oligomerization or intra-cellular routing,

Target Details

disrupting caveolae formation and resulting in Limb-Girdle muscular dystrophy type-1C (LGMD-1C), hyperCKemia or rippling muscle disease (RMD). Alternative splicing has been identified for this locus, with inclusion or exclusion of a differentially spliced intron. In addition, transcripts utilize multiple polyA sites and contain two potential translation initiation sites.

Molecular Weight: 17 kDa

NCBI Accession: [NP_001225](#)

UniProt: [P56539](#)

Pathways: [Carbohydrate Homeostasis](#), [Regulation of Muscle Cell Differentiation](#), [Regulation of Cell Size](#), [Skeletal Muscle Fiber Development](#), [Negative Regulation of Transporter Activity](#)

Application Details

Application Notes: WB 1:500-1:2000, IHC 1:25-1:100

Restrictions: For Research Use only

Handling

Format: Liquid

Concentration: 0.2 mg/mL

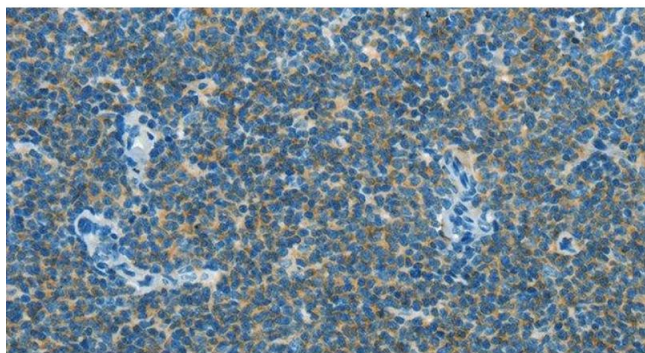
Buffer: PBS with 0.05 % sodium azide and 50 % glycerol, PH7.4

Preservative: Sodium azide

Precaution of Use: This product contains Sodium azide: a POISONOUS AND HAZARDOUS SUBSTANCE which should be handled by trained staff only.

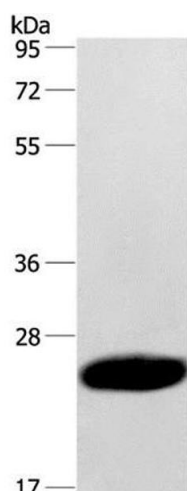
Storage: -20 °C

Storage Comment: Store at -20°C. Avoid freeze / thaw cycles.



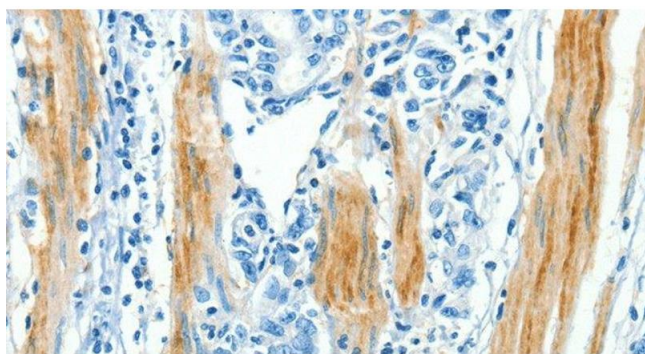
Immunohistochemistry (Paraffin-embedded Sections)

Image 1. Immunohistochemistry of paraffin-embedded Human lymphoma using CAV3 Polyclonal Antibody at dilution of 1:30



Western Blotting

Image 2. Western Blot analysis of Human fetal muscle tissue using CAV3 Polyclonal Antibody at dilution of 1:500



Immunohistochemistry (Paraffin-embedded Sections)

Image 3. Immunohistochemistry of paraffin-embedded Human gastric cancer using CAV3 Polyclonal Antibody at dilution of 1:30