

Datasheet for ABIN7238690

**anti-ADRP antibody**

3 Images

[Go to Product page](#)

## Overview

Quantity:	200 µL
Target:	ADRP (PLIN2)
Reactivity:	Human, Mouse
Host:	Rabbit
Clonality:	Polyclonal
Conjugate:	This ADRP antibody is un-conjugated
Application:	Western Blotting (WB), Immunohistochemistry (IHC), ELISA

## Product Details

Immunogen:	Synthetic peptide of human PLIN2
Isotype:	IgG
Characteristics:	Polyclonal Antibody
Purification:	Affinity purification

## Target Details

Target:	ADRP (PLIN2)
Alternative Name:	PLIN2 ( <a href="#">PLIN2 Products</a> )
Background:	<p>The protein encoded by this gene belongs to the perilipin family, members of which coat intracellular lipid storage droplets. This protein is associated with the lipid globule surface membrane material, and maybe involved in development and maintenance of adipose tissue.</p> <p>However, it is not restricted to adipocytes as previously thought, but is found in a wide range of</p>

## Target Details

cultured cell lines, including fibroblasts, endothelial and epithelial cells, and tissues, such as lactating mammary gland, adrenal cortex, Sertoli and Leydig cells, and hepatocytes in alcoholic liver cirrhosis, suggesting that it may serve as a marker of lipid accumulation in diverse cell types and diseases.

Molecular Weight: 48 kDa

NCBI Accession: [NP\\_001113](#)

UniProt: [Q99541](#)

Pathways: [Regulation of Lipid Metabolism by PPARalpha](#), [Lipid Metabolism](#)

## Application Details

Application Notes: WB 1:500-1:2000, IHC 1:25-1:100

Restrictions: For Research Use only

## Handling

Format: Liquid

Concentration: 0.6 mg/mL

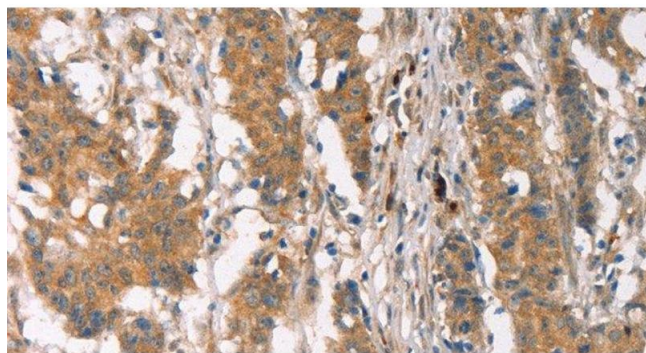
Buffer: PBS with 0.05 % sodium azide and 50 % glycerol, PH7.4

Preservative: Sodium azide

Precaution of Use: This product contains Sodium azide: a POISONOUS AND HAZARDOUS SUBSTANCE which should be handled by trained staff only.

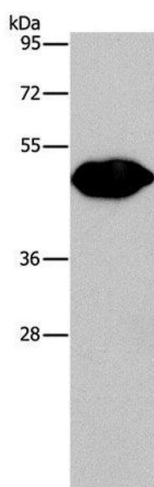
Storage: -20 °C

Storage Comment: Store at -20°C. Avoid freeze / thaw cycles.



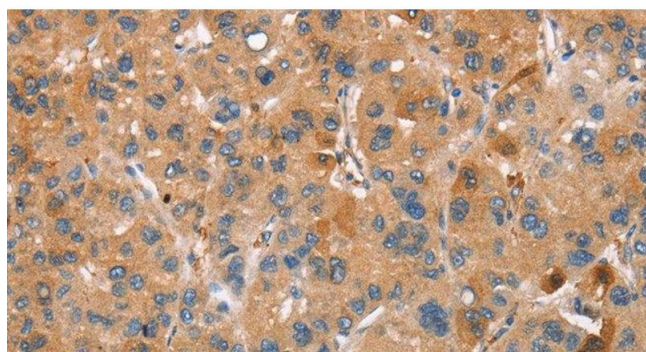
#### Immunohistochemistry (Paraffin-embedded Sections)

**Image 1.** Immunohistochemistry of paraffin-embedded Human gastric cancer using PLIN2 Polyclonal Antibody at dilution of 1:30



#### Western Blotting

**Image 2.** Western Blot analysis of Mouse brain tissue using PLIN2 Polyclonal Antibody at dilution of 1:680



#### Immunohistochemistry (Paraffin-embedded Sections)

**Image 3.** Immunohistochemistry of paraffin-embedded Human liver cancer using PLIN2 Polyclonal Antibody at dilution of 1:30