

Datasheet for ABIN7238744

anti-STK4 antibody

3 Images

[Go to Product page](#)

Overview

Quantity:	200 µL
Target:	STK4
Reactivity:	Human, Mouse
Host:	Rabbit
Clonality:	Polyclonal
Conjugate:	This STK4 antibody is un-conjugated
Application:	Western Blotting (WB), Immunohistochemistry (IHC), ELISA

Product Details

Immunogen:	Synthetic peptide of human STK3/STK4
Isotype:	IgG
Characteristics:	Polyclonal Antibody
Purification:	Affinity purification

Target Details

Target:	STK4
Alternative Name:	STK4 (STK4 Products)
Background:	<p>Sterile-20 (Ste20) is a serine/threonine kinase in <i>Saccharomyces cerevisiae</i> that is involved in relaying signals from G protein-coupled receptors to cyto-solic MAP kinase cascades.</p> <p>Mammalian protein kinases that display sequence similarity to Ste20 are divided into two groups, the PAK subfamily and the GCK subfamily. The mammalian Ste20-like kinases (MST</p>

Target Details

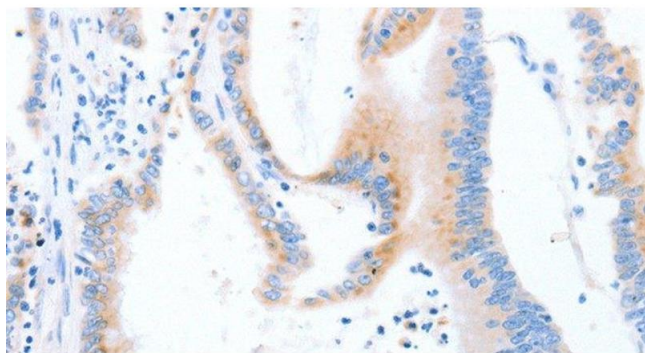
	kinases), also known as Krs proteins, are members of the GCK subfamily. Ksr-1 (MST-2) and Ksr-2 (MST-1) are both direct substrates of caspase-3 that accelerate caspase-3 activation.
Molecular Weight:	56 kDa
NCBI Accession:	NP_006273
UniProt:	Q13043
Pathways:	Tube Formation

Application Details

Application Notes:	WB 1:500-1:2000, IHC 1:50-1:200
Restrictions:	For Research Use only

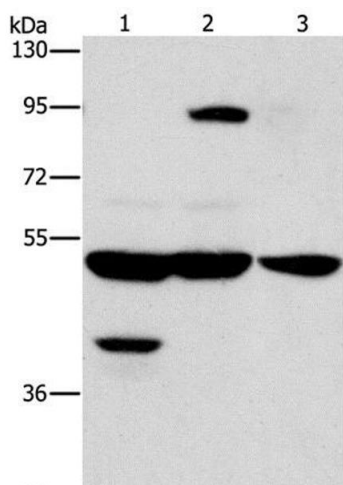
Handling

Format:	Liquid
Concentration:	0.7 mg/mL
Buffer:	PBS with 0.05 % sodium azide and 50 % glycerol, PH7.4
Preservative:	Sodium azide
Precaution of Use:	This product contains Sodium azide: a POISONOUS AND HAZARDOUS SUBSTANCE which should be handled by trained staff only.
Storage:	-20 °C
Storage Comment:	Store at -20°C. Avoid freeze / thaw cycles.



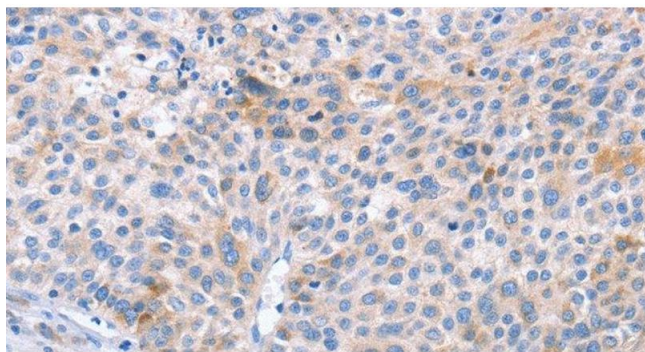
Immunohistochemistry (Paraffin-embedded Sections)

Image 1. Immunohistochemistry of paraffin-embedded Human colon cancer using STK4 Polyclonal Antibody at dilution of 1:70



Western Blotting

Image 2. Western Blot analysis of Human bladder carcinoma tissue and A172 cell, Human brain malignant glioma tissue using STK4 Polyclonal Antibody at dilution of 1:1000



Immunohistochemistry (Paraffin-embedded Sections)

Image 3. Immunohistochemistry of paraffin-embedded Human liver cancer using STK4 Polyclonal Antibody at dilution of 1:70