



Datasheet for ABIN723875

anti-PP2A alpha/beta antibody (AA 205-309)



[Go to Product page](#)

4 Images

2 Publications

Overview

Quantity:	100 µL
Target:	PP2A alpha/beta (PP2A A/B)
Binding Specificity:	AA 205-309
Reactivity:	Human, Mouse
Host:	Rabbit
Clonality:	Polyclonal
Conjugate:	This PP2A alpha/beta antibody is un-conjugated
Application:	Western Blotting (WB), Immunofluorescence (Cultured Cells) (IF (cc)), Immunofluorescence (Paraffin-embedded Sections) (IF (p)), Flow Cytometry (FACS), ELISA, Immunohistochemistry (Paraffin-embedded Sections) (IHC (p)), Immunohistochemistry (Frozen Sections) (IHC (fro))

Product Details

Immunogen:	KLH conjugated synthetic peptide derived from human PP-2A
Isotype:	IgG
Cross-Reactivity:	Human, Mouse
Predicted Reactivity:	Rat,Dog,Cow,Pig,Chicken,Rabbit
Purification:	Purified by Protein A.

Target Details

Target:	PP2A alpha/beta (PP2A A/B)
---------	----------------------------

Target Details

Alternative Name:	PP2A alpha / beta (PP2A A/B Products)
Background:	<p>Synonyms: RP-C, PP2Ac, PP2CA, PP2Calpha, Serine/threonine-protein phosphatase 2A catalytic subunit alpha isoform, PP2A-alpha, Replication protein C, PPP2CA</p> <p>Background: PP2A is the major phosphatase for microtubule-associated proteins (MAPs). PP2A can modulate the activity of phosphorylase B kinase casein kinase 2, mitogen-stimulated S6 kinase, and MAP-2 kinase. Cooperates with SGOL2 to protect centromeric cohesin from separase-mediated cleavage in oocytes specifically during meiosis I (By similarity). Can dephosphorylate SV4 large T antigen and p53/TP53. Activates RAF1 by dephosphorylating it at 'Ser-259'.</p>
Gene ID:	5515
UniProt:	P67775

Application Details

Application Notes:	WB 1:300-5000 ELISA 1:500-1000 FCM 1:20-100 IHC-P 1:200-400 IHC-F 1:100-500 IF(IHC-P) 1:50-200 IF(IHC-F) 1:50-200 IF(ICC) 1:50-200
Restrictions:	For Research Use only

Handling

Format:	Liquid
Concentration:	1 µg/µL
Buffer:	0.01M TBS(pH 7.4) with 1 % BSA, 0.02 % Proclin300 and 50 % Glycerol.
Preservative:	ProClin
Precaution of Use:	This product contains ProClin: a POISONOUS AND HAZARDOUS SUBSTANCE, which should be handled by trained staff only.
Storage:	4 °C,-20 °C

Handling

Storage Comment: Shipped at 4°C. Store at -20°C for one year. Avoid repeated freeze/thaw cycles.

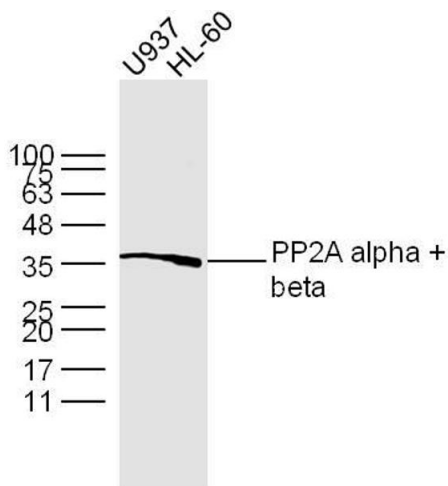
Expiry Date: 12 months

Publications

Product cited in: Lin, Bo, Tan, Sun, Song, Zhao, Ma, Li, Zheng, Xu: "Feasibility of β -Sheet Breaker Peptide-H102 Treatment for Alzheimer's Disease Based on β -Amyloid Hypothesis." in: **PLoS ONE**, Vol. 9, Issue 11, pp. e112052, (2014) ([PubMed](#)).

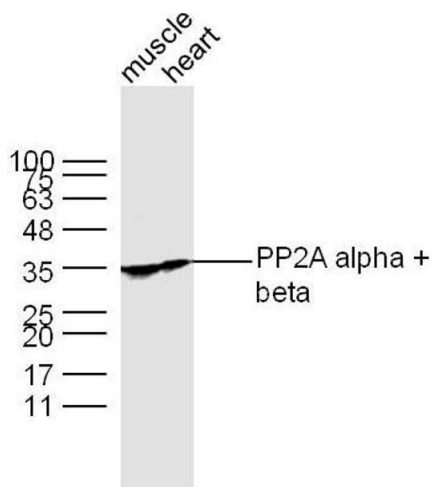
Zhao, Di, Liu, Liu, Lai, Lü: "Involvement of GSK3 and PP2A in ginsenoside Rb1's attenuation of aluminum-induced tau hyperphosphorylation." in: **Behavioural brain research**, Vol. 241, pp. 228-34, (2013) ([PubMed](#)).

Images



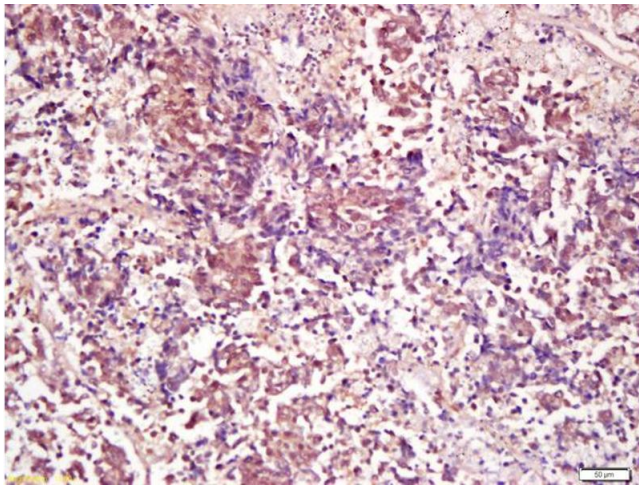
Western Blotting

Image 1. Lane 1: U937 lysates Lane 2: HL-60 lysates probed with PP2A alpha + beta Polyclonal Antibody, Unconjugated at 1:300 dilution and 4°C overnight incubation. Followed by conjugated secondary antibody incubation at 1:10000 for 60 min at 37°C.



Western Blotting

Image 2. Lane 1: Muscle lysates Lane 2: Heart lysates probed with PP2A alpha + beta Polyclonal Antibody, Unconjugated at 1:300 dilution and 4°C overnight incubation. Followed by conjugated secondary antibody incubation at 1:10000 for 60 min at 37°C.



Immunohistochemistry

Image 3. Formalin-fixed and paraffin embedded human lung carcinoma labeled with Anti-PP2A alpha + beta Polyclonal Antibody, Unconjugated (ABIN723875) at 1:200 followed by conjugation to the secondary antibody and DAB staining

Please check the [product details page](#) for more images. Overall 4 images are available for ABIN723875.