

Datasheet for ABIN7238756

anti-CCR6 antibody**2** Images[Go to Product page](#)

Overview

Quantity:	200 µL
Target:	CCR6
Reactivity:	Human
Host:	Rabbit
Clonality:	Polyclonal
Application:	ELISA, Western Blotting (WB), Immunohistochemistry (IHC)

Product Details

Immunogen:	Synthetic peptide of human CCR6
Isotype:	IgG
Characteristics:	Polyclonal Antibody
Purification:	Affinity purification

Target Details

Target:	CCR6
Alternative Name:	CCR6 (CCR6 Products)
Background:	This gene encodes a member of the beta chemokine receptor family, which is predicted to be a seven transmembrane protein similar to G protein-coupled receptors. The gene is preferentially expressed by immature dendritic cells and memory T cells. The ligand of this receptor is macrophage inflammatory protein 3 alpha (MIP-3 alpha). This receptor has been shown to be important for B-lineage maturation and antigen-driven B-cell differentiation, and it may regulate

Target Details

the migration and recruitment of dendritic and T cells during inflammatory and immunological responses. Alternatively spliced transcript variants that encode the same protein have been described for this gene.

Molecular Weight: 42 kDa

NCBI Accession: [NP_004358](#)

UniProt: [P51684](#)

Pathways: [cAMP Metabolic Process](#)

Application Details

Application Notes: WB 1:1000-1:5000, IHC 1:50-1:200

Restrictions: For Research Use only

Handling

Format: Liquid

Concentration: 0.6 mg/mL

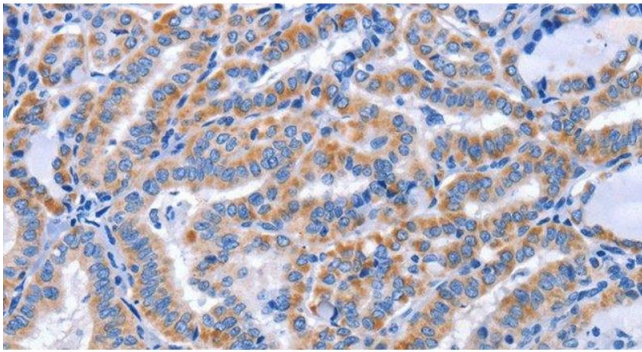
Buffer: PBS with 0.05 % sodium azide and 50 % glycerol, PH7.4

Preservative: Sodium azide

Precaution of Use: This product contains Sodium azide: a POISONOUS AND HAZARDOUS SUBSTANCE which should be handled by trained staff only.

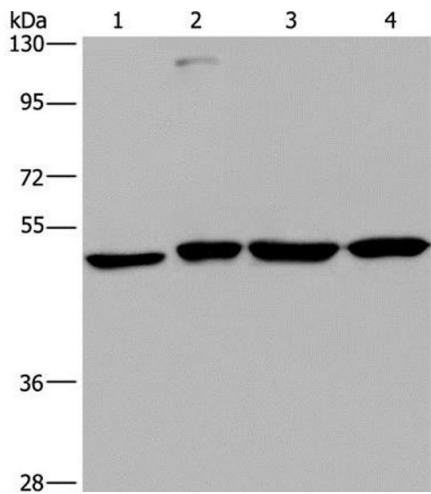
Storage: -20 °C

Storage Comment: Store at -20°C. Avoid freeze / thaw cycles.



Immunohistochemistry (Paraffin-embedded Sections)

Image 1. Immunohistochemistry of paraffin-embedded Human thyroid cancer using CCR6 Polyclonal Antibody at dilution of 1:50



Western Blotting

Image 2. Western Blot analysis of A431, HepG2, Raji and K562 cell using CCR6 Polyclonal Antibody at dilution of 1:966