

Datasheet for ABIN7238792

anti-CDK11 antibody

3 Images

[Go to Product page](#)

Overview

Quantity:	200 µL
Target:	CDK11 (CDK11B)
Reactivity:	Human, Mouse
Host:	Rabbit
Clonality:	Polyclonal
Conjugate:	This CDK11 antibody is un-conjugated
Application:	Western Blotting (WB), ELISA, Immunohistochemistry (IHC)

Product Details

Immunogen:	Synthetic peptide of human CDK11A/CDK11B
Isotype:	IgG
Characteristics:	Polyclonal Antibody
Purification:	Affinity purification

Target Details

Target:	CDK11 (CDK11B)
Alternative Name:	CDK11B (CDK11B Products)
Background:	Cyclin-dependent kinases (CDKs) are a family of protein kinases first discovered for their role in regulating the cell cycle. They are also involved in regulating transcription, mRNA processing, and the differentiation of nerve cells. They are present in all known eukaryotes, and their regulatory function in the cell cycle has been evolutionarily conserved. CDKs are relatively small

Target Details

proteins, with Human, Mouse molecular weights ranging from 34 to 40 kDa, and contain little more than the kinase domain. By definition, a CDK binds a regulatory protein called a cyclin. Without cyclin, CDK has little kinase activity, only the cyclin-CDK complex is an active kinase. CDKs phosphorylate their substrates on serines and threonines, so they are serine-threonine kinases.

Molecular Weight: 93 kDa

NCBI Accession: [NP_277021](#)

UniProt: [B7ZVY7](#)

Pathways: [Regulation of Lipid Metabolism by PPARalpha, M Phase](#)

Application Details

Application Notes: WB 1:500-1:2000, IHC 1:50-1:200

Restrictions: For Research Use only

Handling

Format: Liquid

Concentration: 0.4 mg/mL

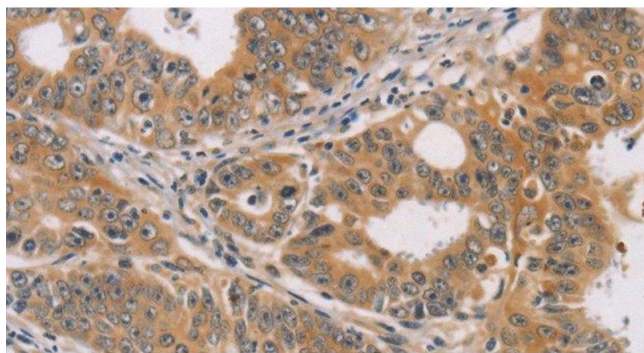
Buffer: PBS with 0.05 % sodium azide and 50 % glycerol, PH7.4

Preservative: Sodium azide

Precaution of Use: This product contains Sodium azide: a POISONOUS AND HAZARDOUS SUBSTANCE which should be handled by trained staff only.

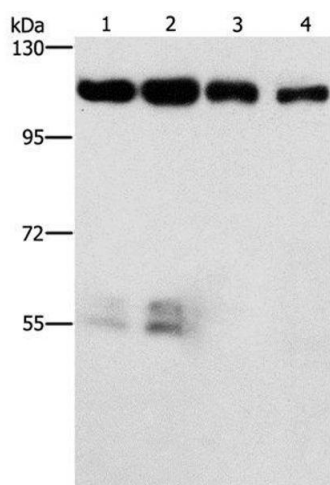
Storage: -20 °C

Storage Comment: Store at -20°C. Avoid freeze / thaw cycles.



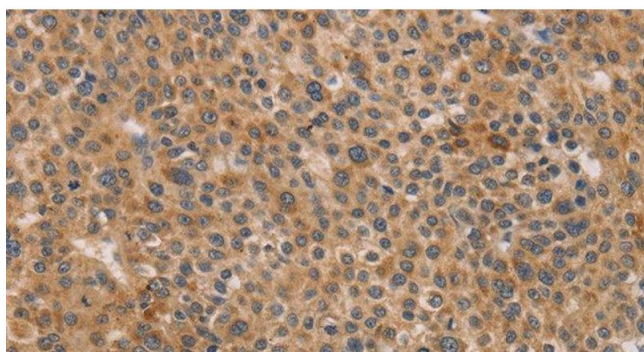
Immunohistochemistry (Paraffin-embedded Sections)

Image 1. Immunohistochemistry of paraffin-embedded Human gastric cancer using CDK11B Polyclonal Antibody at dilution of 1:40



Western Blotting

Image 2. Western Blot analysis of HeLa and HepG2 cell, Lovo cell and Human colon cancer tissue using CDK11B Polyclonal Antibody at dilution of 1:750



Immunohistochemistry (Paraffin-embedded Sections)

Image 3. Immunohistochemistry of paraffin-embedded Human liver cancer using CDK11B Polyclonal Antibody at dilution of 1:40