

Datasheet for ABIN7238804  
**anti-CDCP1 antibody**



[Go to Product page](#)

3 Images

### Overview

|              |  |
|--------------|--|
| Quantity:    | 200 µL   |
| Target:      | CDCP1  |
| Reactivity:  | Human  |
| Host:        | Rabbit   |
| Clonality:   | Polyclonal   |
| Conjugate:   | This CDCP1 antibody is un-conjugated                     |
| Application: | Western Blotting (WB), ELISA, Immunohistochemistry (IHC) |

### Product Details

|                  |                                  |
|------------------|----------------------------------|
| Immunogen:       | Synthetic peptide of human CDCP1 |
| Isotype:         | IgG                              |
| Characteristics: | Polyclonal Antibody              |
| Purification:    | Affinity purification            |

### Target Details

|                   |  |
|-------------------|--|
| Target:           | CDCP1  |
| Alternative Name: | CDCP1 ( <a href="#">CDCP1 Products</a> )   |
| Background:       | This gene encodes a transmembrane protein which contains three extracellular CUB domains and acts as a substrate for Src family kinases. The protein plays a role in the tyrosine phosphorylation-dependent regulation of cellular events that are involved in tumor invasion and metastasis. Alternative splicing results in multiple transcript variants of this gene. |

## Target Details

Molecular Weight: 93 kDa

NCBI Accession: [NP\\_073753](#)

UniProt: [Q9H5V8](#)

## Application Details

Application Notes: WB 1:1000-1:5000, IHC 1:50-1:200

Restrictions: For Research Use only

## Handling

Format: Liquid

Concentration: 0.3 mg/mL

Buffer: PBS with 0.05 % sodium azide and 50 % glycerol, PH7.4

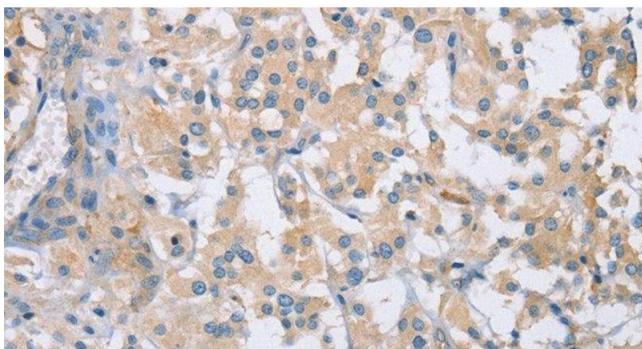
Preservative: Sodium azide

Precaution of Use: This product contains Sodium azide: a POISONOUS AND HAZARDOUS SUBSTANCE which should be handled by trained staff only.

Storage: -20 °C

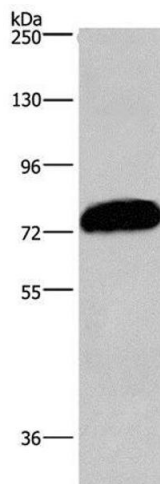
Storage Comment: Store at -20°C. Avoid freeze / thaw cycles.

## Images



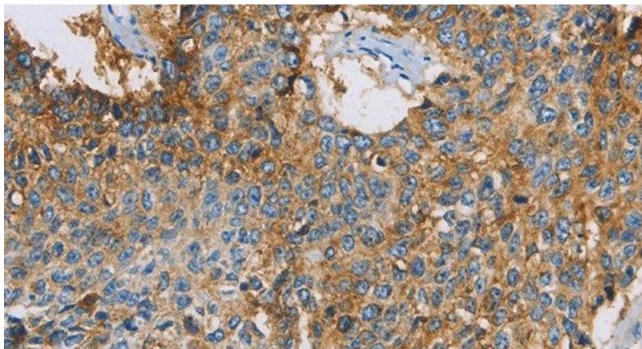
### Immunohistochemistry (Paraffin-embedded Sections)

**Image 1.** Immunohistochemistry of paraffin-embedded Human thyroid cancer using CDCEP1 Polyclonal Antibody at dilution of 1:50



### Western Blotting

**Image 2.** Western Blot analysis of PC3 cell using CDCP1 Polyclonal Antibody at dilution of 1:1100



### Immunohistochemistry (Paraffin-embedded Sections)

**Image 3.** Immunohistochemistry of paraffin-embedded Human lung cancer using CDCP1 Polyclonal Antibody at dilution of 1:50