

Datasheet for ABIN7238846  
**anti-HID1/DMC1 antibody**[Go to Product page](#)

## 1 Image

## Overview

Quantity:	200 µL
Target:	HID1/DMC1 (HID1)
Reactivity:	Human, Mouse
Host:	Rabbit
Clonality:	Polyclonal
Conjugate:	This HID1/DMC1 antibody is un-conjugated
Application:	ELISA, Immunohistochemistry (IHC)

## Product Details

Immunogen:	Synthetic peptide of human HID1
Isotype:	IgG
Characteristics:	Polyclonal Antibody
Purification:	Affinity purification

## Target Details

Target:	HID1/DMC1 (HID1)
Alternative Name:	HID1 ( <a href="#">HID1 Products</a> )
Background:	C17orf28 (chromosome 17 open reading frame 28) is a 788 amino acid multi-pass membrane protein that is expressed in heart, skeletal muscle, colon, spleen, kidney, liver, small intestine and lung. C17orf28 may be involved in the development of cancers in a broad range of tissues. Existing as three alternatively spliced isoforms, C17orf28 is encoded by a gene mapping to

## Target Details

human chromosome 17, whichHuman, Mouseakes up over 2.5 % of the human genome with about 81 million bases encoding over 1,200 genes. Two key tumor suppressor genes are associated with chromosome 17, namely, p53 and BRCA1.

NCBI Accession: [NP\\_085133](#)

UniProt: [Q8IV36](#)

## Application Details

Application Notes: IHC 1:25-1:100

Restrictions: For Research Use only

## Handling

Format: Liquid

Concentration: 0.8 mg/mL

Buffer: PBS with 0.05 % sodium azide and 50 % glycerol, PH7.4

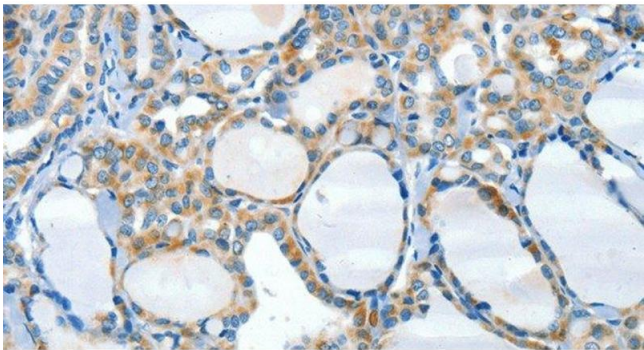
Preservative: Sodium azide

Precaution of Use: This product contains Sodium azide: a POISONOUS AND HAZARDOUS SUBSTANCE which should be handled by trained staff only.

Storage: -20 °C

Storage Comment: Store at -20°C. Avoid freeze / thaw cycles.

## Images



### Immunohistochemistry (Paraffin-embedded Sections)

**Image 1.** Immunohistochemistry of paraffin-embedded Human thyroid cancer tissue using HID1 Polyclonal Antibody at dilution 1:50