



[Go to Product page](#)

Datasheet for ABIN7238900  
**anti-DIRAS1 antibody**

2 Images

Overview

Quantity:	200 µL
Target:	DIRAS1
Reactivity:	Human
Host:	Rabbit
Clonality:	Polyclonal
Conjugate:	This DIRAS1 antibody is un-conjugated
Application:	ELISA, Immunohistochemistry (IHC)

Product Details

Immunogen:	Synthetic peptide of human DIRAS1
Isotype:	IgG
Characteristics:	Polyclonal Antibody
Purification:	Affinity purification

Target Details

Target:	DIRAS1
Alternative Name:	DIRAS1 ( <a href="#">DIRAS1 Products</a> )
Background:	DIRAS1 (DIRAS family, GTP-binding Ras-like 1), also known as distinct subgroup of the Ras family member 1, RIG (Ras-related inhibitor of cell growth), small GTP-binding tumor suppressor 1 or GBTS1, is a 198 amino acid cell membrane protein expressed at high levels in brain and heart. DIRAS1 displays low GTPase activity and is encoded by a gene that maps to

## Target Details

human chromosome 19p13.3.

NCBI Accession: [NP\\_660156](#)

UniProt: [O95057](#)

Pathways: [Ribonucleoprotein Complex Subunit Organization, Ribosome Assembly](#)

## Application Details

Application Notes: IHC 1:50-1:200

Restrictions: For Research Use only

## Handling

Format: Liquid

Concentration: 0.6 mg/mL

Buffer: PBS with 0.05 % sodium azide and 50 % glycerol, PH7.4

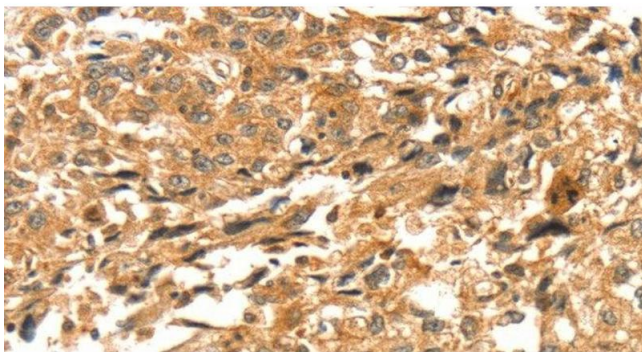
Preservative: Sodium azide

Precaution of Use: This product contains Sodium azide: a POISONOUS AND HAZARDOUS SUBSTANCE which should be handled by trained staff only.

Storage: -20 °C

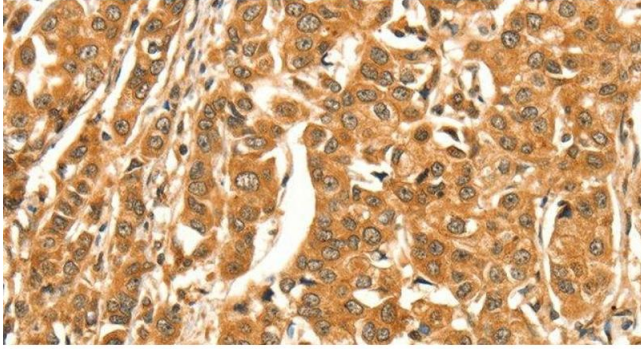
Storage Comment: Store at -20°C. Avoid freeze / thaw cycles.

## Images



### Immunohistochemistry (Paraffin-embedded Sections)

**Image 1.** Immunohistochemistry of paraffin-embedded Human esophagus cancer tissue using DIRAS1 Polyclonal Antibody at dilution 1:52



### Immunohistochemistry (Paraffin-embedded Sections)

**Image 2.** Immunohistochemistry of paraffin-embedded Human breast cancer tissue using DIRAS1 Polyclonal Antibody at dilution 1:52