

Datasheet for ABIN7238924

**anti-Eppin antibody****1** Image[Go to Product page](#)

## Overview

Quantity:	200 µL
Target:	Eppin (SPINLW1)
Reactivity:	Human, Mouse
Host:	Rabbit
Clonality:	Polyclonal
Conjugate:	This Eppin antibody is un-conjugated
Application:	Western Blotting (WB), ELISA

## Product Details

Immunogen:	Synthetic peptide of human EPPIN
Isotype:	IgG
Characteristics:	Polyclonal Antibody
Purification:	Affinity purification

## Target Details

Target:	Eppin (SPINLW1)
Alternative Name:	EPPIN ( <a href="#">SPINLW1 Products</a> )
Background:	This gene encodes an epididymal protease inhibitor, which contains both kunitz-type and WAP-type four-disulfide core (WFDC) protease inhibitor consensus sequences. Most WFDC genes are localized to chromosome 20q12-q13 in two clusters: centromeric and telomeric. This gene is a member of the WFDC gene family and belongs to the telomeric cluster. The protein can

## Target Details

inhibit human sperm motility, and polymorphisms in this gene are associated with Human, Mouse male infertility. Read-through transcription also exists between this gene and the downstream WFDC6 (WAP four-disulfide core domain 6) gene.

Molecular Weight: 15 kDa

NCBI Accession: [NP\\_065131](#)

UniProt: [O95925](#)

## Application Details

Application Notes: WB 1:500-1:2000

Restrictions: For Research Use only

## Handling

Format: Liquid

Concentration: 0.7 mg/mL

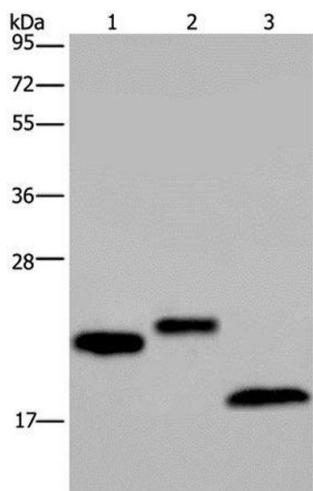
Buffer: PBS with 0.05 % sodium azide and 50 % glycerol, PH7.4

Preservative: Sodium azide

Precaution of Use: This product contains Sodium azide: a POISONOUS AND HAZARDOUS SUBSTANCE which should be handled by trained staff only.

Storage: -20 °C

Storage Comment: Store at -20°C. Avoid freeze / thaw cycles.



Western Blotting

**Image 1.** Western Blot analysis of NIH/3T3 cell, Human testis and Mouse fat tissue using EPPIN Polyclonal Antibody at dilution of 1:400