



[Go to Product page](#)

Datasheet for ABIN7238939 anti-Separase antibody

3 Images

Overview

Quantity:	200 µL
Target:	Separase (ESPL1)
Reactivity:	Human, Mouse
Host:	Rabbit
Clonality:	Polyclonal
Conjugate:	This Separase antibody is un-conjugated
Application:	ELISA, Immunohistochemistry (IHC), Western Blotting (WB)

Product Details

Immunogen:	Synthetic peptide of human ESPL1
Isotype:	IgG
Characteristics:	Polyclonal Antibody
Purification:	Affinity purification

Target Details

Target:	Separase (ESPL1)
Alternative Name:	ESPL1 (ESPL1 Products)
Background:	Stable cohesion between sister chromatids before anaphase and their timely separation during anaphase are critical for chromosome inheritance. In vertebrates, sister chromatid cohesion is released in 2 steps via distinct mechanisms. The first step involves phosphorylation of STAG1 or STAG2 in the cohesin complex. The second step involves cleavage of the cohesin subunit

Target Details

SCC1 by ESPL1, or separase, which initiates the final separation of sister chromatids.

Molecular Weight: 233 kDa

NCBI Accession: [NP_036423](#)

UniProt: [Q14674](#)

Application Details

Application Notes: WB 1:200-1:1000, IHC 1:25-1:100

Restrictions: For Research Use only

Handling

Format: Liquid

Concentration: 0.5 mg/mL

Buffer: PBS with 0.05 % sodium azide and 50 % glycerol, PH7.4

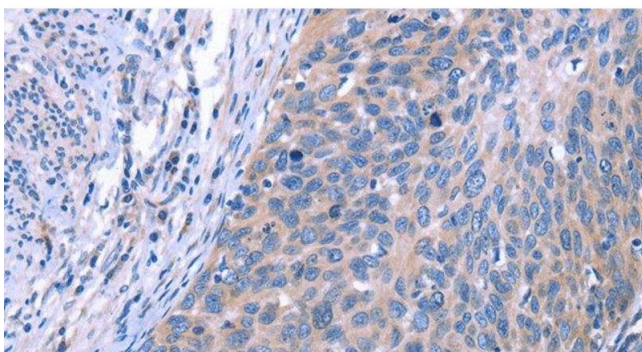
Preservative: Sodium azide

Precaution of Use: This product contains Sodium azide: a POISONOUS AND HAZARDOUS SUBSTANCE which should be handled by trained staff only.

Storage: -20 °C

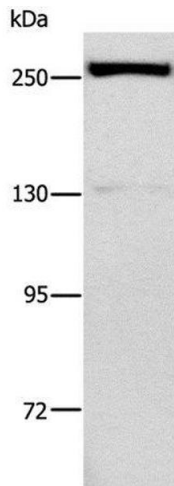
Storage Comment: Store at -20°C. Avoid freeze / thaw cycles.

Images



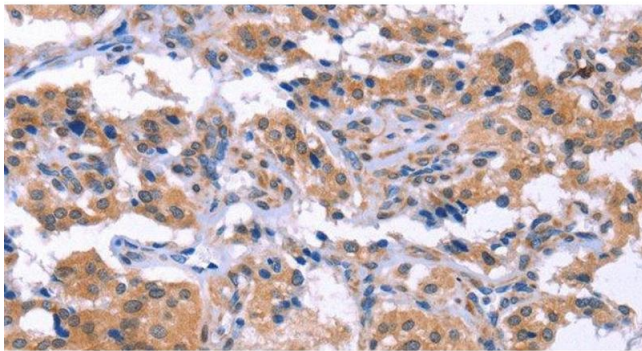
Immunohistochemistry (Paraffin-embedded Sections)

Image 1. Immunohistochemistry of paraffin-embedded Human cervical cancer using ESPL1 Polyclonal Antibody at dilution of 1:40



Western Blotting

Image 2. Western Blot analysis of Raji cell using ESPL1 Polyclonal Antibody at dilution of 1:500



Immunohistochemistry (Paraffin-embedded Sections)

Image 3. Immunohistochemistry of paraffin-embedded Human thyroid cancer using ESPL1 Polyclonal Antibody at dilution of 1:40