



Datasheet for ABIN7238984  
**anti-Glucagon Receptor antibody**



[Go to Product page](#)

2 Images

Overview

Quantity:	200 µL
Target:	Glucagon Receptor (GCGR)
Reactivity:	Human, Rat, Mouse
Host:	Rabbit
Clonality:	Polyclonal
Conjugate:	This Glucagon Receptor antibody is un-conjugated
Application:	ELISA, Western Blotting (WB), Immunohistochemistry (IHC)

Product Details

Immunogen:	Synthetic peptide of human GCGR
Isotype:	IgG
Characteristics:	Polyclonal Antibody
Purification:	Affinity purification

Target Details

Target:	Glucagon Receptor (GCGR)
Alternative Name:	Glucagon Receptor ( <a href="#">GCGR Products</a> )
Background:	The protein encoded by this gene is a glucagon receptor that is important in controlling blood glucose levels. Defects in this gene are a cause of non-insulin-dependent diabetes mellitus (NIDDM).

## Target Details

Molecular Weight:	54 kDa
NCBI Accession:	<a href="#">NP_000151</a>
UniProt:	<a href="#">P47871</a>
Pathways:	<a href="#">Carbohydrate Homeostasis, Regulation of Carbohydrate Metabolic Process</a>

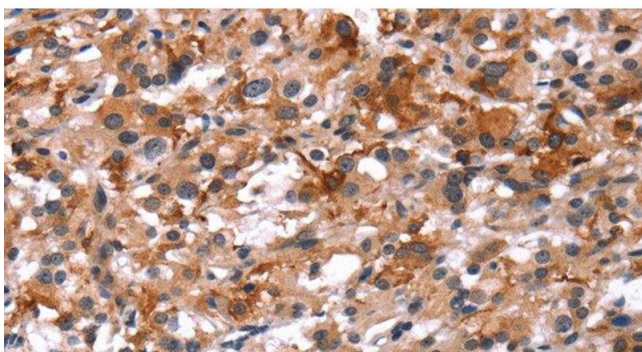
## Application Details

Application Notes:	WB 1:200-1:1000, IHC 1:50-1:200
Restrictions:	For Research Use only

## Handling

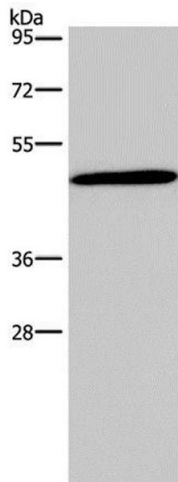
Format:	Liquid
Concentration:	0.8 mg/mL
Buffer:	PBS with 0.05 % sodium azide and 50 % glycerol, PH7.4
Preservative:	Sodium azide
Precaution of Use:	This product contains Sodium azide: a POISONOUS AND HAZARDOUS SUBSTANCE which should be handled by trained staff only.
Storage:	-20 °C
Storage Comment:	Store at -20°C. Avoid freeze / thaw cycles.

## Images



### Immunohistochemistry (Paraffin-embedded Sections)

**Image 1.** Immunohistochemistry of paraffin-embedded Human thyroid cancer using Glucagon Receptor Polyclonal Antibody at dilution of 1:40



### Western Blotting

**Image 2.** Western Blot analysis of 293T cell using Glucagon Receptor Polyclonal Antibody at dilution of 1:200