

Datasheet for ABIN7239023

anti-BRK1 antibody

3 Images

[Go to Product page](#)

Overview

Quantity:	200 µL
Target:	BRK1
Reactivity:	Human, Mouse
Host:	Rabbit
Clonality:	Polyclonal
Conjugate:	This BRK1 antibody is un-conjugated
Application:	Immunohistochemistry (IHC), ELISA, Western Blotting (WB)

Product Details

Immunogen:	Synthetic peptide of human BRK1
Isotype:	IgG
Characteristics:	Polyclonal Antibody
Purification:	Affinity purification

Target Details

Target:	BRK1
Alternative Name:	BRK1 (BRK1 Products)
Background:	HSPC300 (hematopoietic stem cell protein 300) is also known as probable protein BRICK1 or C3orf10 (chromosome 3 open reading frame 10) and is a 75 amino acid protein that is expressed as two isoforms and localizes to both the cytoplasm and the cytoskeleton. HSPC300 is thought to regulate cytoskeletal organization and Actin polymerization. Free HSPC300 exists

Target Details

as homotrimers prior to its incorporation into the WAVE complex. The WAVE complex includes five proteins, one of which is HSPC300, that regulate the ARC (Arp2/3 complex) which is responsible for Actin nucleation and is Rac 1-dependent. Because HSPC300 is a highly conserved subunit of the WAVE complex across many species, it is thought to have the same or similar functions in many different organisms.

Molecular Weight: 9 kDa

NCBI Accession: [NP_060932](#)

UniProt: [Q8WUW1](#)

Pathways: [RTK Signaling](#)

Application Details

Application Notes: WB 1:500-1:2000, IHC 1:50-1:200

Restrictions: For Research Use only

Handling

Format: Liquid

Concentration: 0.6 mg/mL

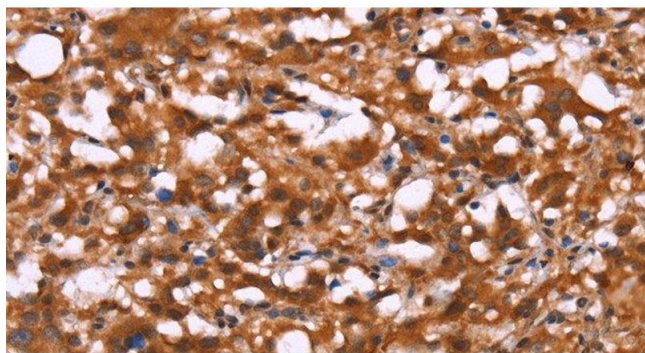
Buffer: PBS with 0.05 % sodium azide and 50 % glycerol, PH7.4

Preservative: Sodium azide

Precaution of Use: This product contains Sodium azide: a POISONOUS AND HAZARDOUS SUBSTANCE which should be handled by trained staff only.

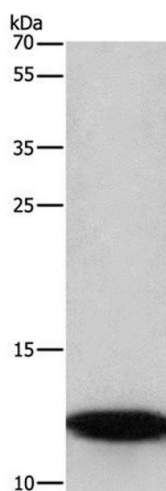
Storage: -20 °C

Storage Comment: Store at -20°C. Avoid freeze / thaw cycles.



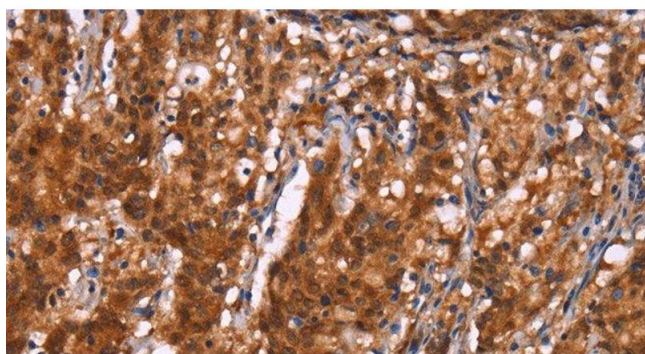
Immunohistochemistry (Paraffin-embedded Sections)

Image 1. Immunohistochemistry of paraffin-embedded Human thyroid cancer using BRK1 Polyclonal Antibody at dilution of 1:40



Western Blotting

Image 2. Western Blot analysis of A172 cell using BRK1 Polyclonal Antibody at dilution of 1:350



Immunohistochemistry (Paraffin-embedded Sections)

Image 3. Immunohistochemistry of paraffin-embedded Human gastric cancer using BRK1 Polyclonal Antibody at dilution of 1:40