

Datasheet for ABIN7239029

anti-HLTF antibody**2** Images[Go to Product page](#)

Overview

Quantity:	200 µL
Target:	HLTF
Reactivity:	Human
Host:	Rabbit
Clonality:	Polyclonal
Conjugate:	This HLTF antibody is un-conjugated
Application:	ELISA, Immunohistochemistry (IHC)

Product Details

Immunogen:	Synthetic peptide of human HLTF
Isotype:	IgG
Characteristics:	Polyclonal Antibody
Purification:	Affinity purification

Target Details

Target:	HLTF
Alternative Name:	HLTF (HLTF Products)
Background:	This gene encodes a member of the SWI/SNF family. Members of this family have helicase and ATPase activities and are thought to regulate transcription of certain genes by altering the chromatin structure around those genes. The encoded protein contains a RING finger DNA binding motif. Two transcript variants encoding the same protein have been found for this

Target Details

gene. However, use of an alternative translation start site produces an isoform that is truncated at the N-terminus compared to the full-length protein.

NCBI Accession: [NP_003062](#)

UniProt: [Q14527](#)

Application Details

Application Notes: IHC 1:50-1:100

Restrictions: For Research Use only

Handling

Format: Liquid

Concentration: 0.3 mg/mL

Buffer: PBS with 0.05 % sodium azide and 50 % glycerol, PH7.4

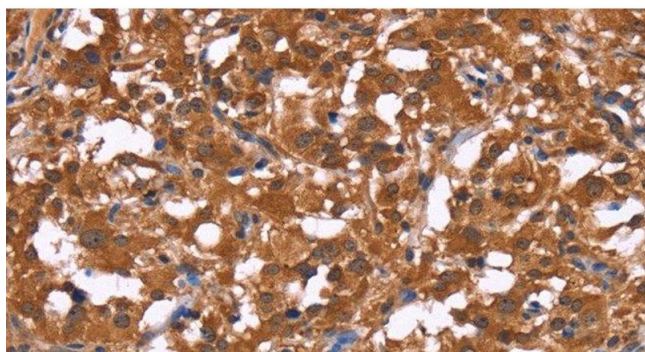
Preservative: Sodium azide

Precaution of Use: This product contains Sodium azide: a POISONOUS AND HAZARDOUS SUBSTANCE which should be handled by trained staff only.

Storage: -20 °C

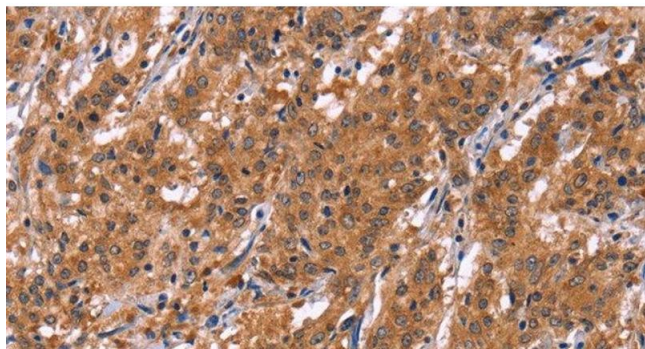
Storage Comment: Store at -20°C. Avoid freeze / thaw cycles.

Images



Immunohistochemistry (Paraffin-embedded Sections)

Image 1. Immunohistochemistry of paraffin-embedded Human thyroid cancer tissue using HLTF Polyclonal Antibody at dilution 1:30



Immunohistochemistry (Paraffin-embedded Sections)

Image 2. Immunohistochemistry of paraffin-embedded Human gastric cancer tissue using HLTF Polyclonal Antibody at dilution 1:30