

Datasheet for ABIN7239047  
**anti-HSD11B2 antibody**

## 2 Images

[Go to Product page](#)

## Overview

Quantity:	200 µL
Target:	HSD11B2
Reactivity:	Human
Host:	Rabbit
Clonality:	Polyclonal
Conjugate:	This HSD11B2 antibody is un-conjugated
Application:	ELISA, Immunohistochemistry (IHC)

## Product Details

Immunogen:	Synthetic peptide of human HSD11B2
Isotype:	IgG
Characteristics:	Polyclonal Antibody
Purification:	Affinity purification

## Target Details

Target:	HSD11B2
Alternative Name:	HSD11B2 ( <a href="#">HSD11B2 Products</a> )
Background:	There are at least two isozymes of the corticosteroid 11-beta-dehydrogenase, a microsomal enzyme complex responsible for the interconversion of cortisol and cortisone. The type I isozyme has both 11-beta-dehydrogenase (cortisol to cortisone) and 11-oxoreductase (cortisone to cortisol) activities. The type II isozyme, encoded by this gene, has only 11-beta-

## Target Details

dehydrogenase activity. In aldosterone-selective epithelial tissues such as the kidney, the type II isozyme catalyzes the glucocorticoid cortisol to the inactive metabolite cortisone, thus preventing illicit activation of the mineralocorticoid receptor.

NCBI Accession: [NP\\_000187](#)

UniProt: [P80365](#)

Pathways: [Steroid Hormone Biosynthesis](#), [Regulation of Systemic Arterial Blood Pressure by Hormones](#)

## Application Details

Application Notes: IHC 1:50-1:200

Restrictions: For Research Use only

## Handling

Format: Liquid

Concentration: 0.6 mg/mL

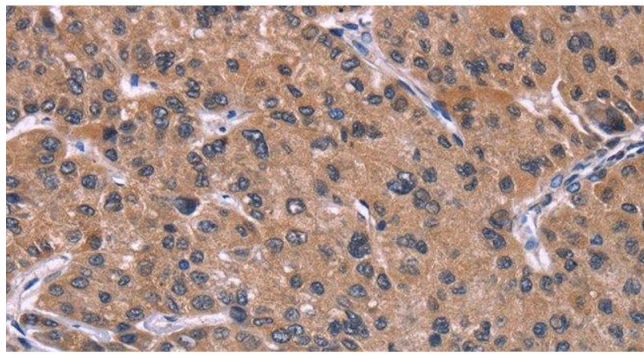
Buffer: PBS with 0.05 % sodium azide and 50 % glycerol, PH7.4

Preservative: Sodium azide

Precaution of Use: This product contains Sodium azide: a POISONOUS AND HAZARDOUS SUBSTANCE which should be handled by trained staff only.

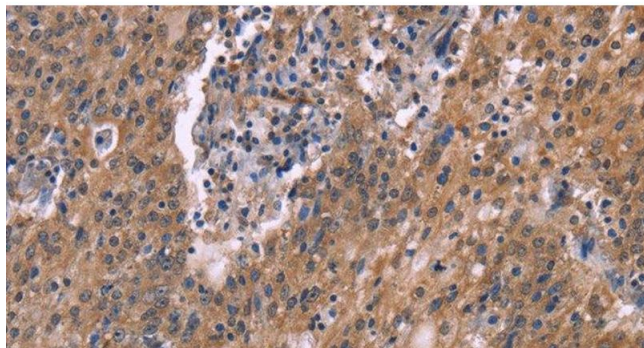
Storage: -20 °C

Storage Comment: Store at -20°C. Avoid freeze / thaw cycles.



#### Immunohistochemistry (Paraffin-embedded Sections)

**Image 1.** Immunohistochemistry of paraffin-embedded Human prostate cancer tissue using HSD11B2 Polyclonal Antibody at dilution 1:35



#### Immunohistochemistry (Paraffin-embedded Sections)

**Image 2.** Immunohistochemistry of paraffin-embedded Human liver cancer tissue using HSD11B2 Polyclonal Antibody at dilution 1:35