

Datasheet for ABIN7239056

**anti-ICAM5 antibody**[Go to Product page](#)**1** Image

## Overview

Quantity:	200 µL
Target:	ICAM5
Reactivity:	Human, Mouse
Host:	Rabbit
Clonality:	Polyclonal
Conjugate:	This ICAM5 antibody is un-conjugated
Application:	Western Blotting (WB), ELISA

## Product Details

Immunogen:	Synthetic peptide of human ICAM5
Isotype:	IgG
Characteristics:	Polyclonal Antibody
Purification:	Affinity purification

## Target Details

Target:	ICAM5
Alternative Name:	ICAM5 ( <a href="#">ICAM5 Products</a> )
Background:	The protein encoded by this gene is a member of the intercellular adhesion molecule (ICAM) family. All ICAM proteins are type I transmembrane glycoproteins, contain 2-9 immunoglobulin-like C2-type domains, and bind to the leukocyte adhesion LFA-1 protein. This protein is expressed on the surface of telencephalic neurons and displays two types of adhesion activity,

## Target Details

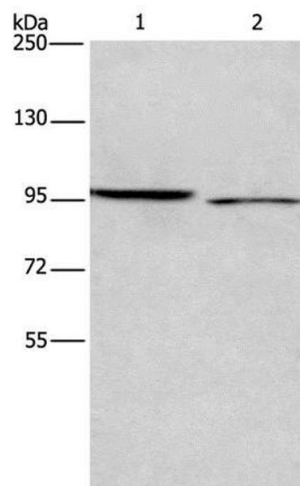
	homophilic binding between neurons and heterophilic binding between neurons and leukocytes. It may be a critical component in neuron-microglial cell interactions in the course of normal development or as part of neurodegenerative diseases.
Molecular Weight:	97 kDa
NCBI Accession:	<a href="#">NP_003250</a>
UniProt:	<a href="#">Q9UMF0</a>
Pathways:	<a href="#">Cell-Cell Junction Organization</a> , <a href="#">ER-Nucleus Signaling</a> , <a href="#">Maintenance of Protein Location</a>

## Application Details

Application Notes:	WB 1:200-1:1000
Restrictions:	For Research Use only

## Handling

Format:	Liquid
Concentration:	0.3 mg/mL
Buffer:	PBS with 0.05 % sodium azide and 50 % glycerol, PH7.4
Preservative:	Sodium azide
Precaution of Use:	This product contains Sodium azide: a POISONOUS AND HAZARDOUS SUBSTANCE which should be handled by trained staff only.
Storage:	-20 °C
Storage Comment:	Store at -20°C. Avoid freeze / thaw cycles.



Western Blotting

**Image 1.** Western Blot analysis of 293T and Hela cell using ICAM5 Polyclonal Antibody at dilution of 1:500