



[Go to Product page](#)

Datasheet for ABIN7239116

anti-JAG2 antibody

2 Images

Overview

Quantity:	200 µL
Target:	JAG2
Reactivity:	Human
Host:	Rabbit
Clonality:	Polyclonal
Conjugate:	This JAG2 antibody is un-conjugated
Application:	Immunohistochemistry (IHC), ELISA

Product Details

Immunogen:	Synthetic peptide of human JAG2
Isotype:	IgG
Characteristics:	Polyclonal Antibody
Purification:	Affinity purification

Target Details

Target:	JAG2
Alternative Name:	JAG2 (JAG2 Products)
Background:	The Notch signaling pathway is an intercellular signaling mechanism that is essential for proper embryonic development. Members of the Notch gene family encode transmembrane receptors that are critical for various cell fate decisions. The protein encoded by this gene is one of several ligands that activate Notch and related receptors. Two transcript variants encoding

Target Details

different isoforms have been found for this gene.

NCBI Accession: [NP_002217](#)

UniProt: [Q9Y219](#)

Pathways: [Notch Signaling, Sensory Perception of Sound](#)

Application Details

Application Notes: IHC 1:50-1:200

Restrictions: For Research Use only

Handling

Format: Liquid

Concentration: 0.6 mg/mL

Buffer: PBS with 0.05 % sodium azide and 50 % glycerol, PH7.4

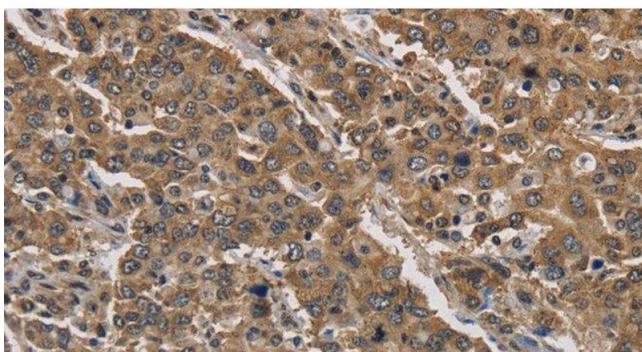
Preservative: Sodium azide

Precaution of Use: This product contains Sodium azide: a POISONOUS AND HAZARDOUS SUBSTANCE which should be handled by trained staff only.

Storage: -20 °C

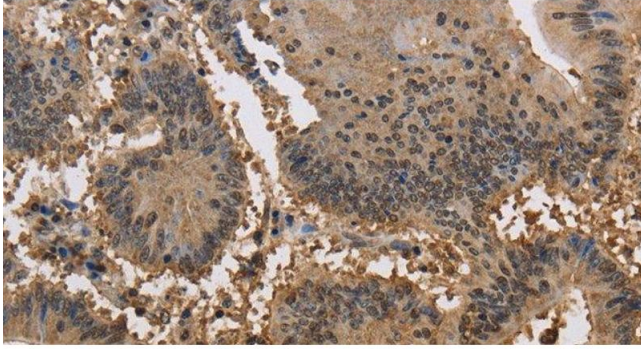
Storage Comment: Store at -20°C. Avoid freeze / thaw cycles.

Images



Immunohistochemistry (Paraffin-embedded Sections)

Image 1. Immunohistochemistry of paraffin-embedded Human liver cancer tissue using JAG2 Polyclonal Antibody at dilution 1:30



Immunohistochemistry (Paraffin-embedded Sections)

Image 2. Immunohistochemistry of paraffin-embedded Human colon cancer tissue using JAG2 Polyclonal Antibody at dilution 1:30