

Datasheet for ABIN7239128

anti-KCND1 antibody[Go to Product page](#)**1** Image

Overview

Quantity:	200 µL
Target:	KCND1 (Kcnd1)
Reactivity:	Human, Mouse
Host:	Rabbit
Clonality:	Polyclonal
Conjugate:	This KCND1 antibody is un-conjugated
Application:	Western Blotting (WB), ELISA

Product Details

Immunogen:	Synthetic peptide of human KCND1
Isotype:	IgG
Characteristics:	Polyclonal Antibody
Purification:	Affinity purification

Target Details

Target:	KCND1 (Kcnd1)
Alternative Name:	KCND1 (Kcnd1 Products)
Background:	This gene encodes a multipass membrane protein that comprises the pore subunit of the voltage-gated A-type potassium channel, which functions in the repolarization of membrane action potentials. Activity of voltage-gated potassium channels is important in a number of physiological processes, among them the regulation of neurotransmitter release, heart rate,

Target Details

	insulin secretion, and smoothHuman, Mouseuscle contraction.
Molecular Weight:	71 kDa
NCBI Accession:	NP_004970
UniProt:	Q9NSA2

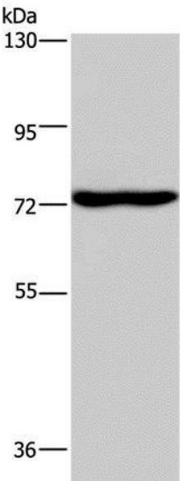
Application Details

Application Notes:	WB 1:500-1:2000
Restrictions:	For Research Use only

Handling

Format:	Liquid
Concentration:	0.4 mg/mL
Buffer:	PBS with 0.05 % sodium azide and 50 % glycerol, PH7.4
Preservative:	Sodium azide
Precaution of Use:	This product contains Sodium azide: a POISONOUS AND HAZARDOUS SUBSTANCE which should be handled by trained staff only.
Storage:	-20 °C
Storage Comment:	Store at -20°C. Avoid freeze / thaw cycles.

Images



Western Blotting

Image 1. Western Blot analysis of Mouse brain tissue using KCND1 Polyclonal Antibody at dilution of 1:400