

Datasheet for ABIN7239137

anti-KCNG4 antibody**3** Images[Go to Product page](#)

Overview

Quantity:	200 µL
Target:	KCNG4 (Kcng4)
Reactivity:	Human, Mouse
Host:	Rabbit
Clonality:	Polyclonal
Conjugate:	This KCNG4 antibody is un-conjugated
Application:	ELISA, Western Blotting (WB), Immunohistochemistry (IHC)

Product Details

Immunogen:	Synthetic peptide of human KCNG4
Isotype:	IgG
Characteristics:	Polyclonal Antibody
Purification:	Affinity purification

Target Details

Target:	KCNG4 (Kcng4)
Alternative Name:	KCNG4 (Kcng4 Products)
Background:	Voltage-gated potassium (Kv) channels represent the most complex class of voltage-gated ion channels from both functional and structural standpoints. Their diverse functions include regulating neurotransmitter release, heart rate, insulin secretion, neuronal excitability, epithelial electrolyte transport, smooth muscle contraction, and cell volume. This gene

Target Details

encodes a member of the potassium channel, voltage-gated, subfamily G. This member functions as a modulatory subunit. The gene has strong expression in brain. Multiple alternatively spliced variants have been found in normal and cancerous tissues.

Molecular Weight: 59 kDa

NCBI Accession: [NP_758857](#)

UniProt: [Q8TDN1](#)

Application Details

Application Notes: WB 1:500-1:2000, IHC 1:100-1:300

Restrictions: For Research Use only

Handling

Format: Liquid

Concentration: 0.5 mg/mL

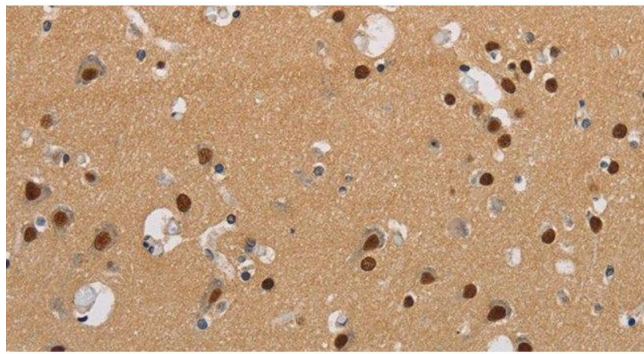
Buffer: PBS with 0.05 % sodium azide and 50 % glycerol, PH7.4

Preservative: Sodium azide

Precaution of Use: This product contains Sodium azide: a POISONOUS AND HAZARDOUS SUBSTANCE which should be handled by trained staff only.

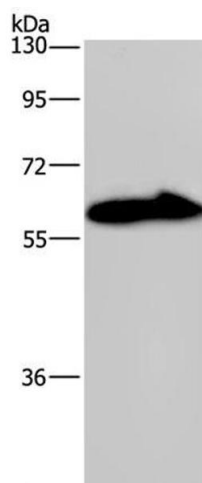
Storage: -20 °C

Storage Comment: Store at -20°C. Avoid freeze / thaw cycles.



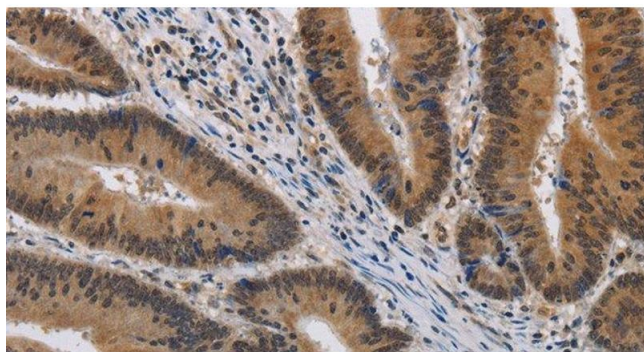
Immunohistochemistry (Paraffin-embedded Sections)

Image 1. Immunohistochemistry of paraffin-embedded Human brain using KCNG4 Polyclonal Antibody at dilution of 1:40



Western Blotting

Image 2. Western Blot analysis of Mouse brain tissue using KCNG4 Polyclonal Antibody at dilution of 1:550



Immunohistochemistry (Paraffin-embedded Sections)

Image 3. Immunohistochemistry of paraffin-embedded Human colon cancer using KCNG4 Polyclonal Antibody at dilution of 1:40