



Datasheet for ABIN7239149
anti-KIF17 antibody



[Go to Product page](#)

1 Image

Overview

Quantity:	200 µL
Target:	KIF17
Reactivity:	Human
Host:	Rabbit
Clonality:	Polyclonal
Conjugate:	This KIF17 antibody is un-conjugated
Application:	ELISA, Immunohistochemistry (IHC)

Product Details

Immunogen:	Synthetic peptide of human KIF17
Isotype:	IgG
Characteristics:	Polyclonal Antibody
Purification:	Affinity purification

Target Details

Target:	KIF17
Alternative Name:	KIF17 (KIF17 Products)
Background:	The kinesins constitute a large family of microtubule-dependent motor proteins, which are responsible for the distribution of numerous organelles, vesicles and macromolecular complexes throughout the cell (1,2). Kinesins also play crucial roles in cell division, intracellular transport and membrane trafficking events including endocytosis and transcytosis (2,3). KIF 17

Target Details

is a neuronal-specific kinesin that transports vesicles containing N-methyl-D-aspartate (NMDA) receptor 2B along microtubules.

NCBI Accession: [NP_065867](#)

UniProt: [Q9P2E2](#)

Application Details

Application Notes: IHC 1:50-1:200

Restrictions: For Research Use only

Handling

Format: Liquid

Concentration: 0.7 mg/mL

Buffer: PBS with 0.05 % sodium azide and 50 % glycerol, PH7.4

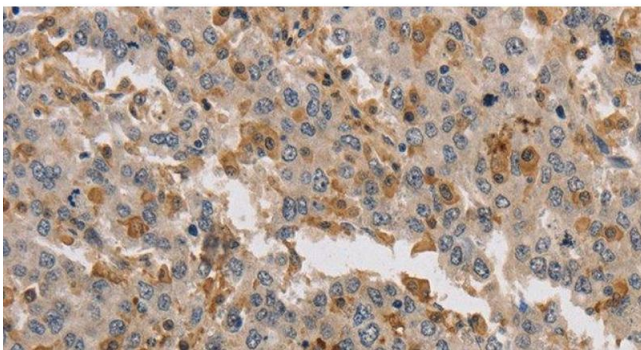
Preservative: Sodium azide

Precaution of Use: This product contains Sodium azide: a POISONOUS AND HAZARDOUS SUBSTANCE which should be handled by trained staff only.

Storage: -20 °C

Storage Comment: Store at -20°C. Avoid freeze / thaw cycles.

Images



Immunohistochemistry (Paraffin-embedded Sections)

Image 1. Immunohistochemistry of paraffin-embedded Human liver cancer tissue using KIF17 Polyclonal Antibody at dilution 1:40