

Datasheet for ABIN7239164

**anti-LASS4 antibody**

3 Images

[Go to Product page](#)

## Overview

Quantity:	200 µL
Target:	LASS4 (CERS4)
Reactivity:	Human
Host:	Rabbit
Clonality:	Polyclonal
Conjugate:	This LASS4 antibody is un-conjugated
Application:	Western Blotting (WB), ELISA, Immunohistochemistry (IHC)

## Product Details

Immunogen:	Synthetic peptide of human CERS4
Isotype:	IgG
Characteristics:	Polyclonal Antibody
Purification:	Affinity purification

## Target Details

Target:	LASS4 (CERS4)
Alternative Name:	CERS4 ( <a href="#">CERS4 Products</a> )
Background:	The LASS (longevity assurance homolog) family members are highly conserved from yeasts to mammals. Six members of this family of proteins have been characterized (LASS1, LASS2, LASS3, LASS4, LASS5 and LASS6) and they are all involved in sphingolipid synthesis. LASS4 is a 394 amino acid endoplasmic reticulum, multi-pass membrane protein. LASS4 increases the

## Target Details

levels of long ceramides such as C22:0- and C24:0-ceramides. In cells deficient for CLN9, as observed in neuronal ceroid lipofuscinosis (NCL) or Batten disease, LASS4 can increase ceramide levels and partially correct growth and apoptosis.

Molecular Weight: 46 kDa

NCBI Accession: [NP\\_078828](#)

UniProt: [Q9HA82](#)

## Application Details

Application Notes: WB 1:500-1:2000, IHC 1:50-1:200

Restrictions: For Research Use only

## Handling

Format: Liquid

Concentration: 0.9 mg/mL

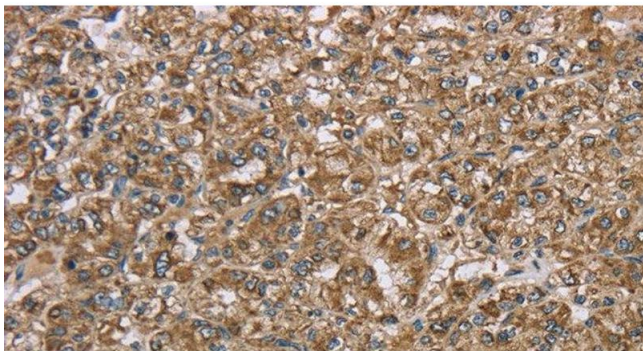
Buffer: PBS with 0.05 % sodium azide and 50 % glycerol, PH7.4

Preservative: Sodium azide

Precaution of Use: This product contains Sodium azide: a POISONOUS AND HAZARDOUS SUBSTANCE which should be handled by trained staff only.

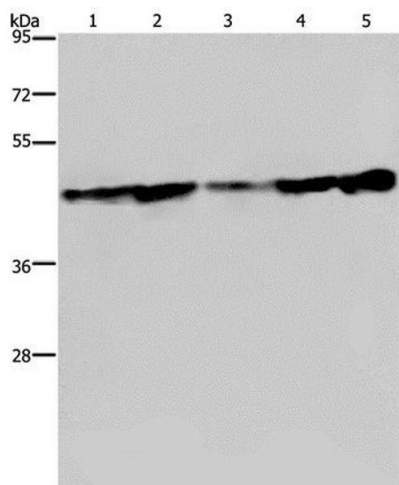
Storage: -20 °C

Storage Comment: Store at -20°C. Avoid freeze / thaw cycles.



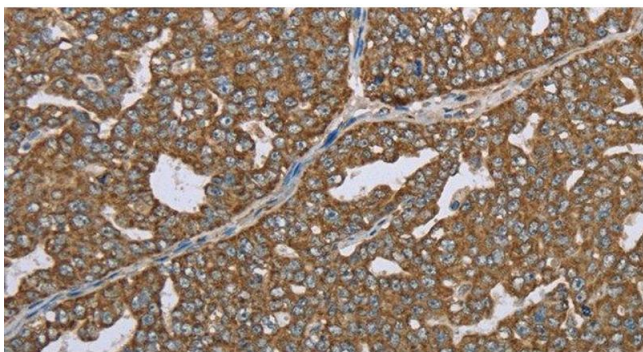
**Immunohistochemistry (Paraffin-embedded Sections)**

**Image 1.** Immunohistochemistry of paraffin-embedded Human prostate cancer using CERS4 Polyclonal Antibody at dilution of 1:35



**Western Blotting**

**Image 2.** Western Blot analysis of Human fetal liver tissue, HT-29 and HUVEC cell, MCF-7 cell and Human hepatocellular carcinoma tissue using CERS4 Polyclonal Antibody at dilution of 1:300



**Immunohistochemistry (Paraffin-embedded Sections)**

**Image 3.** Immunohistochemistry of paraffin-embedded Human ovarian cancer using CERS4 Polyclonal Antibody at dilution of 1:35