

Datasheet for ABIN7239188
anti-MAGE-Like 2 antibody[Go to Product page](#)

1 Image

Overview

Quantity:	200 µL
Target:	MAGE-Like 2 (MAGEL2)
Reactivity:	Human
Host:	Rabbit
Clonality:	Polyclonal
Conjugate:	This MAGE-Like 2 antibody is un-conjugated
Application:	ELISA, Immunohistochemistry (IHC)

Product Details

Immunogen:	Synthetic peptide of human MAGEL2
Isotype:	IgG
Characteristics:	Polyclonal Antibody
Purification:	Affinity purification

Target Details

Target:	MAGE-Like 2 (MAGEL2)
Alternative Name:	MAGEL2 (MAGEL2 Products)
Background:	Prader-Willi syndrome (PWS) is caused by the loss of expression of imprinted genes in chromosome 15q11-q13 region. Affected individuals exhibit neonatal hypotonia, developmental delay, and childhood-onset obesity. Necdin (NDN), a gene involved in the terminal differentiation of neurons, localizes to this region of the genome and has been implicated as one of the genes

Target Details

responsible for the etiology of PWS. This gene is structurally similar to NDN, is also localized to the PWS chromosomal region, and is paternally imprinted, suggesting a possible role for it in PWS.

NCBI Accession: [NP_061939](#)

UniProt: [Q9UJ55](#)

Application Details

Application Notes: IHC 1:50-1:200

Restrictions: For Research Use only

Handling

Format: Liquid

Concentration: 0.8 mg/mL

Buffer: PBS with 0.05 % sodium azide and 50 % glycerol, PH7.4

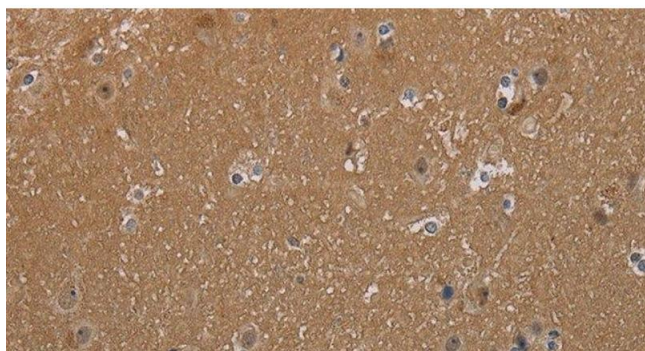
Preservative: Sodium azide

Precaution of Use: This product contains Sodium azide: a POISONOUS AND HAZARDOUS SUBSTANCE which should be handled by trained staff only.

Storage: -20 °C

Storage Comment: Store at -20°C. Avoid freeze / thaw cycles.

Images



Immunohistochemistry (Paraffin-embedded Sections)

Image 1. Immunohistochemistry of paraffin-embedded Human brain tissue using MAGEL2 Polyclonal Antibody at dilution 1:40