

Datasheet for ABIN7239215

anti-CAB39 antibody

3 Images

[Go to Product page](#)

Overview

Quantity:	200 µL
Target:	CAB39
Reactivity:	Human, Mouse
Host:	Rabbit
Clonality:	Polyclonal
Conjugate:	This CAB39 antibody is un-conjugated
Application:	Western Blotting (WB), ELISA, Immunohistochemistry (IHC)

Product Details

Immunogen:	Synthetic peptide of human CAB39
Isotype:	IgG
Characteristics:	Polyclonal Antibody
Purification:	Affinity purification

Target Details

Target:	CAB39
Alternative Name:	CAB39 (CAB39 Products)
Background:	Peutz-Jeghers Syndrome (PJS) is a rare hereditary disease characterized by melanocytic macules of the lips, gastrointestinal hamartomatous polyps and an increased risk for many classes of cancer. The serine/threonine kinase LKB1 (also designated STK11) has been identified as the gene mutated in PJS. LKB1 activity increases upon the binding of a regulatory

Target Details

complex consisting of the STE20-related adaptor-alpha (STRAD alpha) pseudo kinase and the calcium binding protein 39 (MO25 alpha). STRAD and MO25 determine the subcellular localization of LKB1 by initiating its translocation from the nucleus to the cytoplasm, thus regulating the tumor suppressor activity of LKB1. The LKB1/STRAD/MO25 complex acts as an AMP-activated protein kinase kinase (AMPKK).

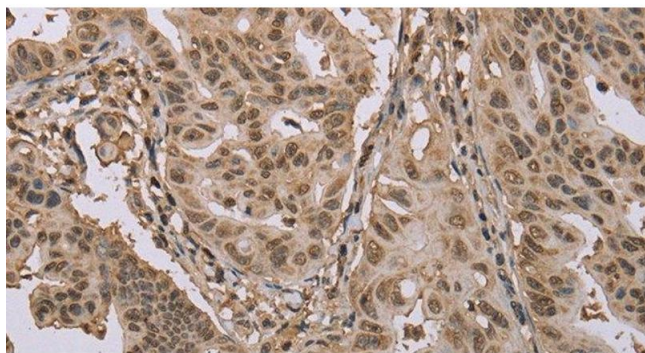
Molecular Weight:	40 kDa
NCBI Accession:	NP_057373
UniProt:	Q9Y376
Pathways:	AMPK Signaling

Application Details

Application Notes:	WB 1:500-1:2000, IHC 1:50-1:200
Restrictions:	For Research Use only

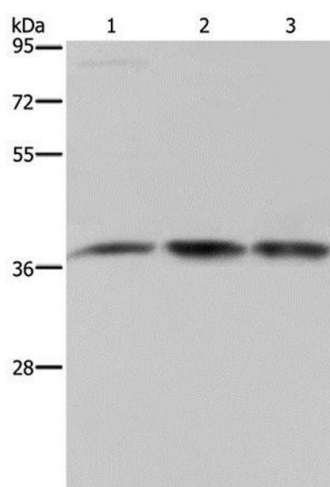
Handling

Format:	Liquid
Concentration:	1.7 mg/mL
Buffer:	PBS with 0.05 % sodium azide and 50 % glycerol, PH7.4
Preservative:	Sodium azide
Precaution of Use:	This product contains Sodium azide: a POISONOUS AND HAZARDOUS SUBSTANCE which should be handled by trained staff only.
Storage:	-20 °C
Storage Comment:	Store at -20°C. Avoid freeze / thaw cycles.



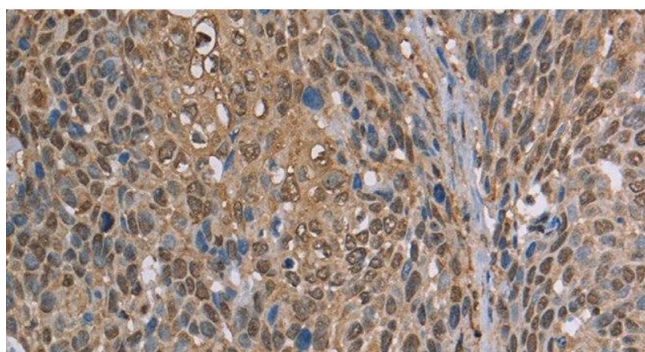
Immunohistochemistry (Paraffin-embedded Sections)

Image 1. Immunohistochemistry of paraffin-embedded Human gastric cancer using CAB39 Polyclonal Antibody at dilution of 1:50



Western Blotting

Image 2. Western Blot analysis of 293T and LoVo cell, Human brain malignant glioma tissue using CAB39 Polyclonal Antibody at dilution of 1:450



Immunohistochemistry (Paraffin-embedded Sections)

Image 3. Immunohistochemistry of paraffin-embedded Human cervical cancer using CAB39 Polyclonal Antibody at dilution of 1:50