



Datasheet for ABIN7239218
anti-MGLL antibody



[Go to Product page](#)

2 Images

Overview

Quantity:	200 µL
Target:	MGLL
Reactivity:	Human
Host:	Rabbit
Clonality:	Polyclonal
Conjugate:	This MGLL antibody is un-conjugated
Application:	Immunohistochemistry (IHC), ELISA

Product Details

Immunogen:	Synthetic peptide of human MGLL
Isotype:	IgG
Characteristics:	Polyclonal Antibody
Purification:	Affinity purification

Target Details

Target:	MGLL
Alternative Name:	MGLL (MGLL Products)
Background:	This gene encodes a serine hydrolase of the AB hydrolase superfamily that catalyzes the conversion of monoacylglycerides to free fatty acids and glycerol. The encoded protein plays a critical role in several physiological processes including pain and nociception through hydrolysis of the endocannabinoid 2-arachidonoylglycerol. Expression of this gene may play a

Target Details

role in cancer tumorigenesis and metastasis. Alternatively spliced transcript variants encoding multiple isoforms have been observed for this gene.

NCBI Accession: [NP_001003794](#)

UniProt: [Q99685](#)

Pathways: [Regulation of G-Protein Coupled Receptor Protein Signaling, Lipid Metabolism](#)

Application Details

Application Notes: IHC 1:50-1:200

Restrictions: For Research Use only

Handling

Format: Liquid

Concentration: 0.9 mg/mL

Buffer: PBS with 0.05 % sodium azide and 50 % glycerol, PH7.4

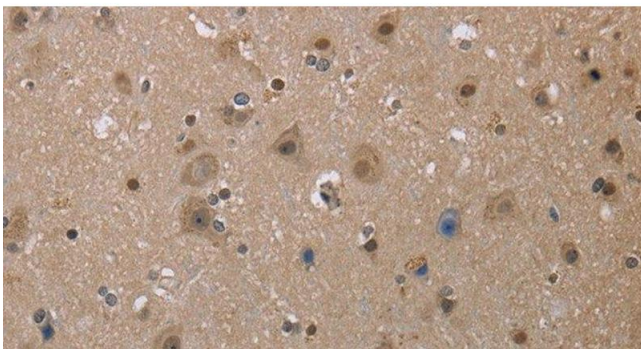
Preservative: Sodium azide

Precaution of Use: This product contains Sodium azide: a POISONOUS AND HAZARDOUS SUBSTANCE which should be handled by trained staff only.

Storage: -20 °C

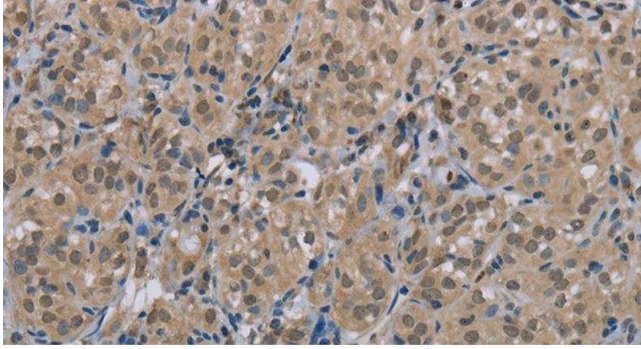
Storage Comment: Store at -20°C. Avoid freeze / thaw cycles.

Images



Immunohistochemistry (Paraffin-embedded Sections)

Image 1. Immunohistochemistry of paraffin-embedded Human brain tissue using MGLL Polyclonal Antibody at dilution 1:40



Immunohistochemistry (Paraffin-embedded Sections)

Image 2. Immunohistochemistry of paraffin-embedded Human thyroid cancer tissue using MGLL Polyclonal Antibody at dilution 1:40