

Datasheet for ABIN7239239

anti-NLRP6 antibody**2** Images[Go to Product page](#)

Overview

Quantity:	200 µL
Target:	NLRP6
Reactivity:	Human
Host:	Rabbit
Clonality:	Polyclonal
Conjugate:	This NLRP6 antibody is un-conjugated
Application:	ELISA, Immunohistochemistry (IHC)

Product Details

Immunogen:	Synthetic peptide of human NLRP6
Isotype:	IgG
Characteristics:	Polyclonal Antibody
Purification:	Affinity purification

Target Details

Target:	NLRP6
Alternative Name:	NLRP6 (NLRP6 Products)
Background:	The protein encoded by this gene binds arginine-vasopressin and may be involved in the arginine-vasopressin-mediated regulation of renal salt-water balance. The encoded protein also mediates inflammatory responses in the colon to allow recovery from intestinal epithelial damage and protects against tumorigenesis and the development of colitis. Finally, this protein

Target Details

can increase activation of NF-kappa-B, activation of CASP1 through interaction with ASC, and cAMP accumulation. Two transcript variants encoding different isoforms have been found for this gene.

NCBI Accession: [NP_612202](#)

UniProt: [P59044](#)

Pathways: [Inflammasome](#)

Application Details

Application Notes: IHC 1:50-1:200

Restrictions: For Research Use only

Handling

Format: Liquid

Concentration: 0.3 mg/mL

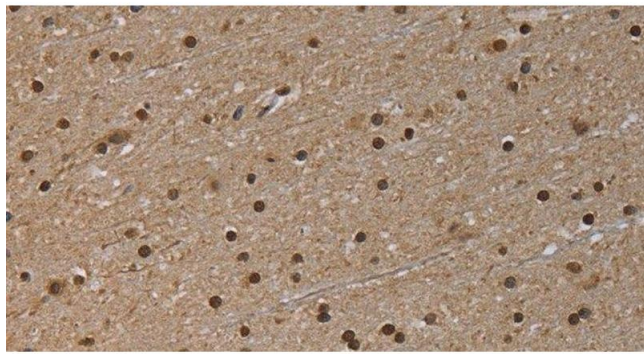
Buffer: PBS with 0.05 % sodium azide and 50 % glycerol, PH7.4

Preservative: Sodium azide

Precaution of Use: This product contains Sodium azide: a POISONOUS AND HAZARDOUS SUBSTANCE which should be handled by trained staff only.

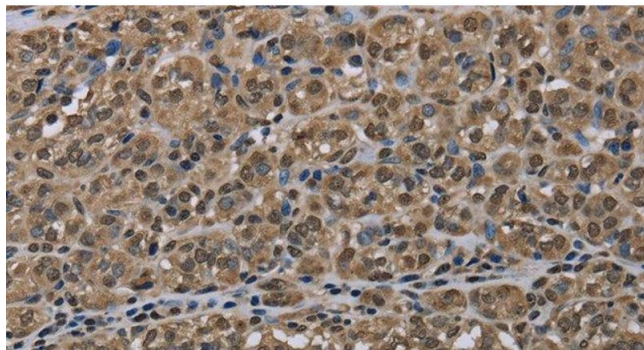
Storage: -20 °C

Storage Comment: Store at -20°C. Avoid freeze / thaw cycles.



Immunohistochemistry (Paraffin-embedded Sections)

Image 1. Immunohistochemistry of paraffin-embedded Human brain tissue using NLRP6 Polyclonal Antibody at dilution 1:50



Immunohistochemistry (Paraffin-embedded Sections)

Image 2. Immunohistochemistry of paraffin-embedded Human thyroid cancer tissue using NLRP6 Polyclonal Antibody at dilution 1:50