

Datasheet for ABIN7239311

anti-P2RY2 antibody**2** Images[Go to Product page](#)

Overview

Quantity:	200 µL
Target:	P2RY2
Reactivity:	Human, Mouse, Rat
Host:	Rabbit
Clonality:	Polyclonal
Conjugate:	This P2RY2 antibody is un-conjugated
Application:	ELISA, Immunohistochemistry (IHC)

Product Details

Immunogen:	Synthetic peptide of human P2RY2
Isotype:	IgG
Characteristics:	Polyclonal Antibody
Purification:	Affinity purification

Target Details

Target:	P2RY2
Alternative Name:	P2RY2 (P2RY2 Products)
Background:	The product of this gene belongs to the family of P2 receptors, which is activated by extracellular nucleotides and subdivided into P2X ligand-gated ion channels and P2Y G-protein coupled receptors. This family has several receptor subtypes with different pharmacological selectivity, which overlaps in some cases, for various adenosine and uridine nucleotides. This

Target Details

receptor, found on many cell types, is activated by ATP and UTP and is reported to be overexpressed on some cancer cell types.

NCBI Accession: [NP_002555](#)

UniProt: [P41231](#)

Pathways: [Cellular Response to Molecule of Bacterial Origin, Smooth Muscle Cell Migration](#)

Application Details

Application Notes: IHC 1:25-1:100

Restrictions: For Research Use only

Handling

Format: Liquid

Concentration: 0.2 mg/mL

Buffer: PBS with 0.05 % sodium azide and 50 % glycerol, PH7.4

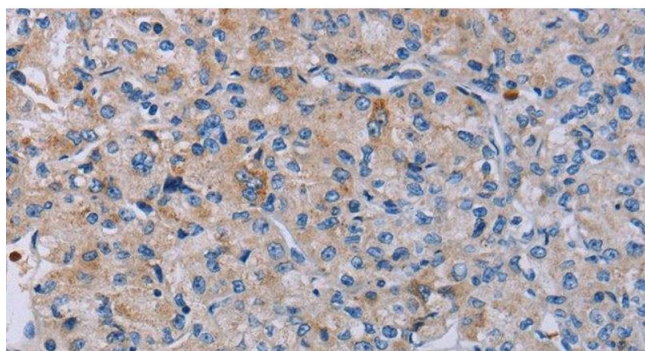
Preservative: Sodium azide

Precaution of Use: This product contains Sodium azide: a POISONOUS AND HAZARDOUS SUBSTANCE which should be handled by trained staff only.

Storage: -20 °C

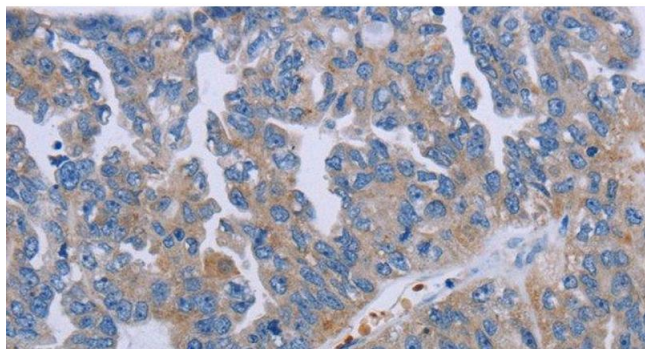
Storage Comment: Store at -20°C. Avoid freeze / thaw cycles.

Images



Immunohistochemistry (Paraffin-embedded Sections)

Image 1. Immunohistochemistry of paraffin-embedded Human prostate cancer using P2RY2 Polyclonal Antibody at dilution of 1:40



Immunohistochemistry (Paraffin-embedded Sections)

Image 2. Immunohistochemistry of paraffin-embedded Human ovarian cancer tissue using P2RY2 Polyclonal Antibody at dilution of 1:40