

Datasheet for ABIN7239350  
**anti-PIK3 gamma antibody**[Go to Product page](#)

## 1 Image

## Overview

Quantity:	200 µL
Target:	PIK3 gamma (PIK3CG)
Reactivity:	Human, Mouse
Host:	Rabbit
Clonality:	Polyclonal
Conjugate:	This PIK3 gamma antibody is un-conjugated
Application:	ELISA, Immunohistochemistry (IHC)

## Product Details

Immunogen:	Synthetic peptide of human PIK3CG
Isotype:	IgG
Characteristics:	Polyclonal Antibody
Purification:	Affinity purification

## Target Details

Target:	PIK3 gamma (PIK3CG)
Alternative Name:	PIK3CG ( <a href="#">PIK3CG Products</a> )
Background:	This gene encodes a protein that belongs to the pi3/pi4-kinase family of proteins. The gene product is an enzyme that phosphorylates phosphoinositides on the 3-hydroxyl group of the inositol ring. It is an important modulator of extracellular signals, including those elicited by E-cadherin-mediated cell-cell adhesion, which plays an important role in maintenance of the

## Target Details

structural and functional integrity of epithelia. In addition to its role in promoting assembly of adherens junctions, the protein is thought to play a pivotal role in the regulation of cytotoxicity in NK cells.

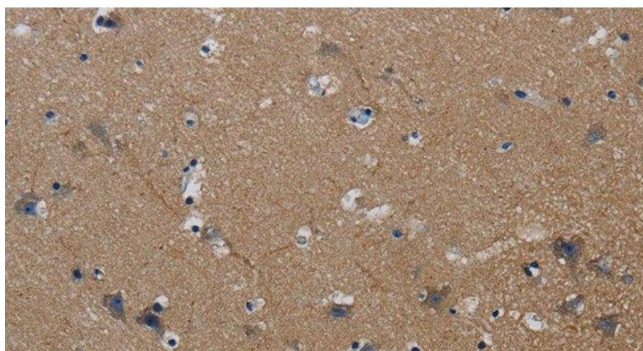
NCBI Accession:	<a href="#">NP_002640</a>
UniProt:	<a href="#">P48736</a>
Pathways:	<a href="#">PI3K-Akt Signaling</a> , <a href="#">RTK Signaling</a> , <a href="#">AMPK Signaling</a> , <a href="#">TLR Signaling</a> , <a href="#">Inositol Metabolic Process</a> , <a href="#">Hepatitis C</a> , <a href="#">VEGF Signaling</a>

## Application Details

Application Notes:	IHC 1:50-1:200
Restrictions:	For Research Use only

## Handling

Format:	Liquid
Concentration:	0.5 mg/mL
Buffer:	PBS with 0.05 % sodium azide and 50 % glycerol, PH7.4
Preservative:	Sodium azide
Precaution of Use:	This product contains Sodium azide: a POISONOUS AND HAZARDOUS SUBSTANCE which should be handled by trained staff only.
Storage:	-20 °C
Storage Comment:	Store at -20°C. Avoid freeze / thaw cycles.



#### Immunohistochemistry (Paraffin-embedded Sections)

**Image 1.** Immunohistochemistry of paraffin-embedded Human brain tissue using PIK3CG Polyclonal Antibody at dilution 1:40