

Datasheet for ABIN7239353

**anti-PNN antibody**[Go to Product page](#)**1** Image

## Overview

Quantity:	200 µL
Target:	PNN
Reactivity:	Human, Mouse
Host:	Rabbit
Clonality:	Polyclonal
Conjugate:	This PNN antibody is un-conjugated
Application:	ELISA, Immunohistochemistry (IHC)

## Product Details

Immunogen:	Synthetic peptide of human PNN
Isotype:	IgG
Characteristics:	Polyclonal Antibody
Purification:	Affinity purification

## Target Details

Target:	PNN
Alternative Name:	PNN ( <a href="#">PNN Products</a> )
Background:	Pinin is a desmosomal associated protein involved with the maintenance of cell to cell adhesion of the epithelium. Pinin is a widespread protein and has been shown to play an important role in cell adhesion through its interaction with nuclear complexes. Pinin is also involved in pre-mRNA splicing through its interactions with a C-terminal RS domain of

## Target Details

Cyclophilin G, a Moca type nuclear cyclophilin. Pinin becomes nuclear during the early stages of embryonic development and remains so throughout the entire period. Defects or lack of Pinin can be lethal at perinatal stages and causes defects in the cardiac outflow tract, axial skeleton, palate and dorsal dermis.

NCBI Accession: [NP\\_002678](#)

UniProt: [Q9H307](#)

## Application Details

Application Notes: IHC 1:50-1:200

Restrictions: For Research Use only

## Handling

Format: Liquid

Concentration: 1.2 mg/mL

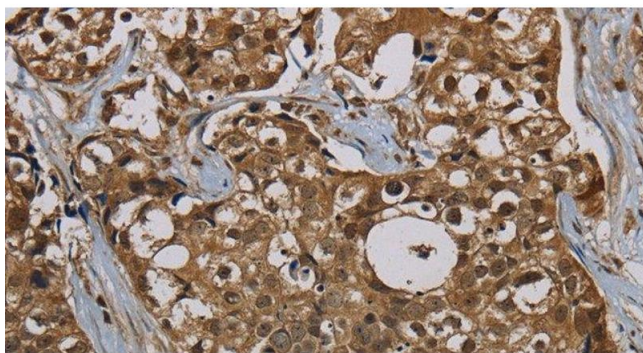
Buffer: PBS with 0.05 % sodium azide and 50 % glycerol, PH7.4

Preservative: Sodium azide

Precaution of Use: This product contains Sodium azide: a POISONOUS AND HAZARDOUS SUBSTANCE which should be handled by trained staff only.

Storage: -20 °C

Storage Comment: Store at -20°C. Avoid freeze / thaw cycles.



#### Immunohistochemistry (Paraffin-embedded Sections)

**Image 1.** Immunohistochemistry of paraffin-embedded Human breast cancer tissue using PNN Polyclonal Antibody at dilution 1:50