

Datasheet for ABIN7239377

anti-PPP1CC antibody

3 Images

[Go to Product page](#)

Overview

Quantity:	200 µL
Target:	PPP1CC
Reactivity:	Human, Mouse, Rat
Host:	Rabbit
Clonality:	Polyclonal
Conjugate:	This PPP1CC antibody is un-conjugated
Application:	Western Blotting (WB), ELISA, Immunohistochemistry (IHC)

Product Details

Immunogen:	Synthetic peptide of human PPP1CC
Isotype:	IgG
Characteristics:	Polyclonal Antibody
Purification:	Affinity purification

Target Details

Target:	PPP1CC
Alternative Name:	PPP1CC (PPP1CC Products)
Background:	<p>The protein encoded by this gene belongs to the protein phosphatase family, PP1 subfamily. PP1 is an ubiquitous serine/threonine phosphatase that regulates many cellular processes, including cell division. It is expressed in mammalian cells as three closely related isoforms, alpha, beta/delta and gamma, which have distinct localization patterns. This gene encodes the</p>

Target Details

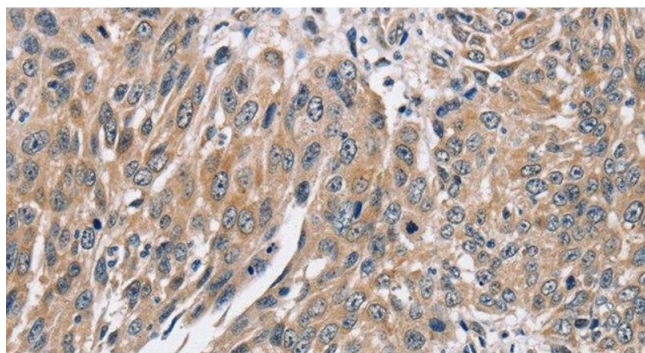
	gamma isozyme. Alternatively spliced transcript variants encoding different isoforms have been found for this gene.
Molecular Weight:	37 kDa
NCBI Accession:	NP_002701
UniProt:	P36873
Pathways:	Cellular Glucan Metabolic Process , Lipid Metabolism

Application Details

Application Notes:	WB 1:500-1:2000, IHC 1:50-1:200
Restrictions:	For Research Use only

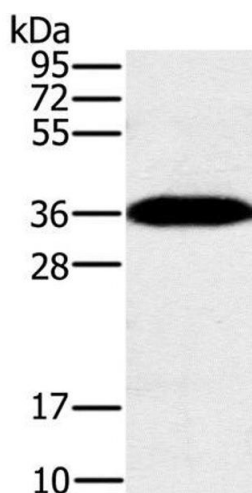
Handling

Format:	Liquid
Concentration:	0.5 mg/mL
Buffer:	PBS with 0.05 % sodium azide and 50 % glycerol, PH7.4
Preservative:	Sodium azide
Precaution of Use:	This product contains Sodium azide: a POISONOUS AND HAZARDOUS SUBSTANCE which should be handled by trained staff only.
Storage:	-20 °C
Storage Comment:	Store at -20°C. Avoid freeze / thaw cycles.



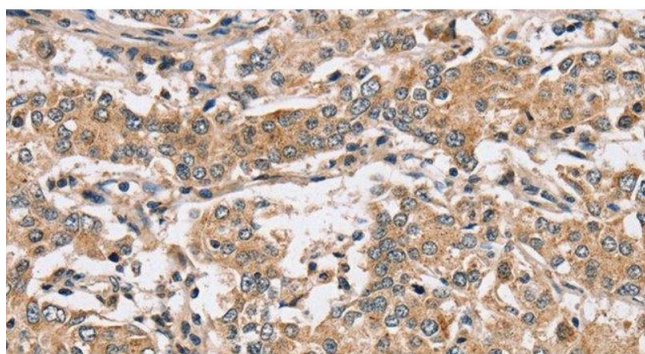
Immunohistochemistry (Paraffin-embedded Sections)

Image 1. Immunohistochemistry of paraffin-embedded Human lung cancer using PPP1CC Polyclonal Antibody at dilution of 1:40



Western Blotting

Image 2. Western Blot analysis of Mouse brain tissue using PPP1CC Polyclonal Antibody at dilution of 1:200



Immunohistochemistry (Paraffin-embedded Sections)

Image 3. Immunohistochemistry of paraffin-embedded Human liver cancer using PPP1CC Polyclonal Antibody at dilution of 1:40