

Datasheet for ABIN7239383

anti-PTP4A2 antibody**2** Images[Go to Product page](#)

Overview

Quantity:	200 µL
Target:	PTP4A2
Reactivity:	Human, Mouse, Rat
Host:	Rabbit
Clonality:	Polyclonal
Conjugate:	This PTP4A2 antibody is un-conjugated
Application:	ELISA, Western Blotting (WB), Immunohistochemistry (IHC)

Product Details

Immunogen:	Synthetic peptide of human PTP4A2
Isotype:	IgG
Characteristics:	Polyclonal Antibody
Purification:	Affinity purification

Target Details

Target:	PTP4A2
Alternative Name:	PTP4A2 (PTP4A2 Products)
Background:	The protein encoded by this gene belongs to a small class of the protein tyrosine phosphatase (PTP) family. PTPs are cell signaling molecules that play regulatory roles in a variety of cellular processes. PTPs in this class contain a protein tyrosine phosphatase catalytic domain and a characteristic C-terminal prenylation motif. This PTP has been shown to primarily associate

Target Details

with plasmic and endosomal membrane through its C-terminal prenylation.

Molecular Weight: 19 kDa

NCBI Accession: [NP_536316](#)

UniProt: [Q12974](#)

Application Details

Application Notes: WB 1:500-1:2000, IHC 1:25-1:100

Restrictions: For Research Use only

Handling

Format: Liquid

Concentration: 0.3 mg/mL

Buffer: PBS with 0.05 % sodium azide and 50 % glycerol, PH7.4

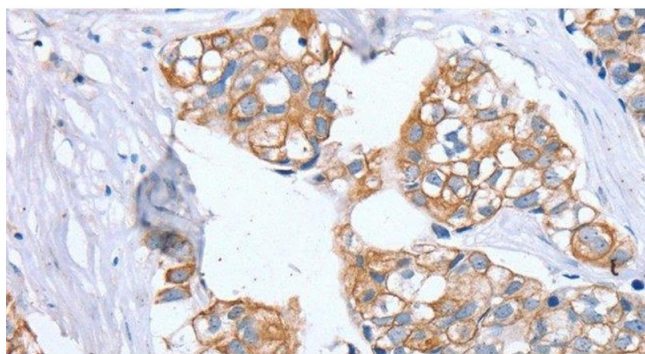
Preservative: Sodium azide

Precaution of Use: This product contains Sodium azide: a POISONOUS AND HAZARDOUS SUBSTANCE which should be handled by trained staff only.

Storage: -20 °C

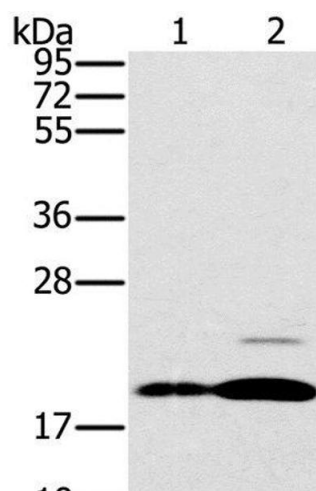
Storage Comment: Store at -20°C. Avoid freeze / thaw cycles.

Images



Immunohistochemistry (Paraffin-embedded Sections)

Image 1. Immunohistochemistry of paraffin-embedded Human breast cancer using PTP4A2 Polyclonal Antibody at dilution of 1:30



Western Blotting

Image 2. Western Blot analysis of Mouse brain and heart tissue using PTP4A2 Polyclonal Antibody at dilution of 1:200