

Datasheet for ABIN7239401

anti-RAB8A antibody**2** Images[Go to Product page](#)

Overview

Quantity:	200 µL
Target:	RAB8A
Reactivity:	Human, Mouse, Rat
Host:	Rabbit
Clonality:	Polyclonal
Conjugate:	This RAB8A antibody is un-conjugated
Application:	Western Blotting (WB), ELISA, Immunohistochemistry (IHC)

Product Details

Immunogen:	Synthetic peptide of human RAB8A
Isotype:	IgG
Characteristics:	Polyclonal Antibody
Purification:	Affinity purification

Target Details

Target:	RAB8A
Alternative Name:	RAB8A (RAB8A Products)
Background:	The protein encoded by this gene is a member of the RAS superfamily which are small GTP/GDP-binding proteins with an average size of 200 amino acids. The RAS-related proteins of the RAB/YPT family may play a role in the transport of proteins from the endoplasmic reticulum to the Golgi and the plasma membrane. This protein shares 97 % , 96 % , and 51 %

Target Details

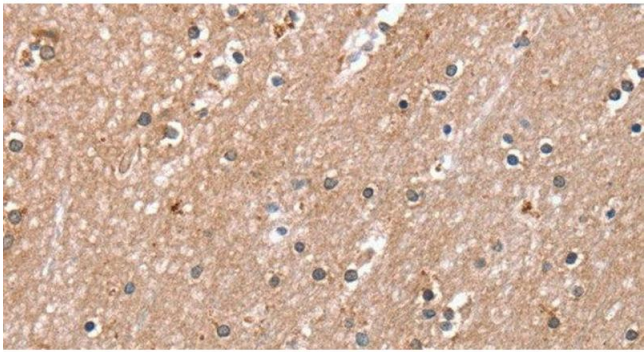
	similarity with the dog RAB8, mouse MEL, and mouse YPT1 proteins, respectively and contains the 4 GTP/GDP-binding sites that are present in all the RAS proteins.
Molecular Weight:	24 kDa
NCBI Accession:	NP_005361
UniProt:	P61006
Pathways:	M Phase , Regulation of long-term Neuronal Synaptic Plasticity , SARS-CoV-2 Protein Interactome

Application Details

Application Notes:	WB 1:500-1:2000, IHC 1:25-1:100
Restrictions:	For Research Use only

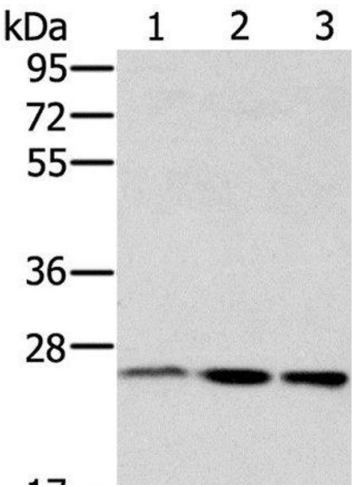
Handling

Format:	Liquid
Concentration:	1 mg/mL
Buffer:	PBS with 0.05 % sodium azide and 50 % glycerol, PH7.4
Preservative:	Sodium azide
Precaution of Use:	This product contains Sodium azide: a POISONOUS AND HAZARDOUS SUBSTANCE which should be handled by trained staff only.
Storage:	-20 °C
Storage Comment:	Store at -20°C. Avoid freeze / thaw cycles.



Immunohistochemistry (Paraffin-embedded Sections)

Image 1. Immunohistochemistry of paraffin-embedded Human brain using RAB8A Polyclonal Antibody at dilution of 1:45



Western Blotting

Image 2. Western Blot analysis of HeLa, hepg2 and Raw264.7 cell using RAB8A Polyclonal Antibody at dilution of 1:650