



[Go to Product page](#)

Datasheet for ABIN7239407
anti-WTH3DI antibody

2 Images

Overview

Quantity:	200 µL
Target:	WTH3DI
Reactivity:	Human
Host:	Rabbit
Clonality:	Polyclonal
Conjugate:	This WTH3DI antibody is un-conjugated
Application:	ELISA, Immunohistochemistry (IHC)

Product Details

Immunogen:	Synthetic peptide of human RAB6C
Isotype:	IgG
Characteristics:	Polyclonal Antibody
Purification:	Affinity purification

Target Details

Target:	WTH3DI
Alternative Name:	RAB6C (WTH3DI Products)
Background:	Ras-related protein Rab-6C is a protein that in humans is encoded by the RAB6C gene. May be involved in the regulation of centrosome duplication and cell cycle progression. Highest levels are found in fetal and adult brain, prostate, testis and spinal cord.

Target Details

NCBI Accession: [NP_115520](#)

UniProt: [Q9H0N0](#)

Application Details

Application Notes: IHC 1:50-1:200

Restrictions: For Research Use only

Handling

Format: Liquid

Concentration: 1 mg/mL

Buffer: PBS with 0.05 % sodium azide and 50 % glycerol, PH7.4

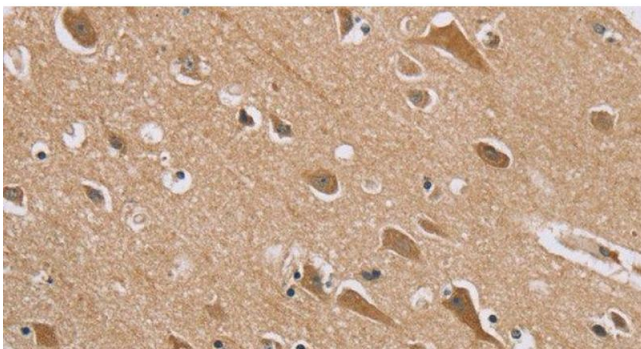
Preservative: Sodium azide

Precaution of Use: This product contains Sodium azide: a POISONOUS AND HAZARDOUS SUBSTANCE which should be handled by trained staff only.

Storage: -20 °C

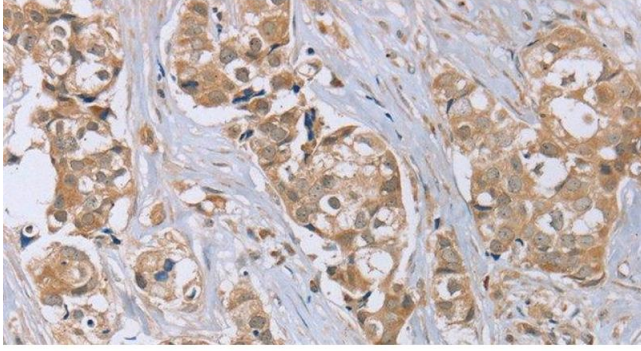
Storage Comment: Store at -20°C. Avoid freeze / thaw cycles.

Images



Immunohistochemistry (Paraffin-embedded Sections)

Image 1. Immunohistochemistry of paraffin-embedded Human brain tissue using RAB6C Polyclonal Antibody at dilution 1:45



Immunohistochemistry (Paraffin-embedded Sections)

Image 2. Immunohistochemistry of paraffin-embedded Human breast cancer tissue using RAB6C Polyclonal Antibody at dilution 1:45