

Datasheet for ABIN7239458
anti-SLC25A12 antibody[Go to Product page](#)

2 Images

Overview

Quantity:	200 µL
Target:	SLC25A12 (Slc25a12)
Reactivity:	Human, Mouse
Host:	Rabbit
Clonality:	Polyclonal
Conjugate:	This SLC25A12 antibody is un-conjugated
Application:	ELISA, Immunohistochemistry (IHC)

Product Details

Immunogen:	Synthetic peptide of human SLC25A12
Isotype:	IgG
Characteristics:	Polyclonal Antibody
Purification:	Affinity purification

Target Details

Target:	SLC25A12 (Slc25a12)
Alternative Name:	SLC25A12 (Slc25a12 Products)
Background:	This gene encodes a calcium-binding mitochondrial carrier protein. The encoded protein localizes to the mitochondria and is involved in the exchange of aspartate for glutamate across the inner mitochondrial membrane. Polymorphisms in this gene may be associated with autism, and mutations in this gene may also be a cause of global cerebral hypomyelination.

Target Details

Alternatively spliced transcript variants have been observed for this gene.

NCBI Accession:	NP_003696
UniProt:	O75746
Pathways:	Ribonucleoside Biosynthetic Process, Dicarboxylic Acid Transport

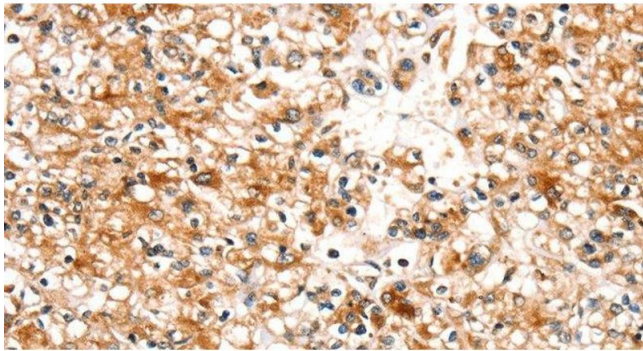
Application Details

Application Notes:	IHC 1:25-1:100
Restrictions:	For Research Use only

Handling

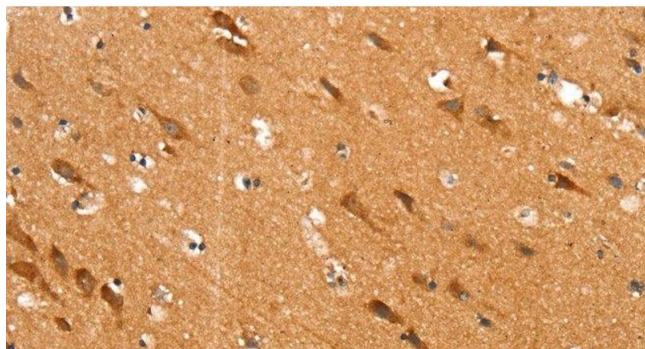
Format:	Liquid
Concentration:	0.4 mg/mL
Buffer:	PBS with 0.05 % sodium azide and 50 % glycerol, PH7.4
Preservative:	Sodium azide
Precaution of Use:	This product contains Sodium azide: a POISONOUS AND HAZARDOUS SUBSTANCE which should be handled by trained staff only.
Storage:	-20 °C
Storage Comment:	Store at -20°C. Avoid freeze / thaw cycles.

Images



Immunohistochemistry (Paraffin-embedded Sections)

Image 1. Immunohistochemistry of paraffin-embedded Human prostate cancer tissue using SLC25A12 Polyclonal Antibody at dilution 1:30



Immunohistochemistry (Paraffin-embedded Sections)

Image 2. Immunohistochemistry of paraffin-embedded Human brain tissue using SLC25A12 Polyclonal Antibody at dilution 1:30