

Datasheet for ABIN7239461
anti-SLC41A2 antibody[Go to Product page](#)

2 Images

Overview

Quantity:	200 µL
Target:	SLC41A2
Reactivity:	Human, Mouse
Host:	Rabbit
Clonality:	Polyclonal
Conjugate:	This SLC41A2 antibody is un-conjugated
Application:	ELISA, Immunohistochemistry (IHC)

Product Details

Immunogen:	Synthetic peptide of human SLC41A3
Isotype:	IgG
Characteristics:	Polyclonal Antibody
Purification:	Affinity purification

Target Details

Target:	SLC41A2
Alternative Name:	SLC41A2 (SLC41A2 Products)
Background:	SLC41A3 (solute carrier family 41 member 3) is a 507 amino acid multi-pass membrane protein that belongs to the SLC41A transporter family that includes SLC41A1 and SLC41A2. Localizing to the cell membrane, SLC41A3 contains ten transmembrane domains and is believed to function as a plasma-membrane cation transporter. Its other two family members, SLC41A1

Target Details

and SLC41A2, have been characterized to function as magnesium transporters and are essential for maintaining magnesium homeostasis within the cell.

NCBI Accession: [NP_115524](#)

UniProt: [Q96JW4](#)

Application Details

Application Notes: IHC 1:40-1:150

Restrictions: For Research Use only

Handling

Format: Liquid

Concentration: 0.5 mg/mL

Buffer: PBS with 0.05 % sodium azide and 50 % glycerol, PH7.4

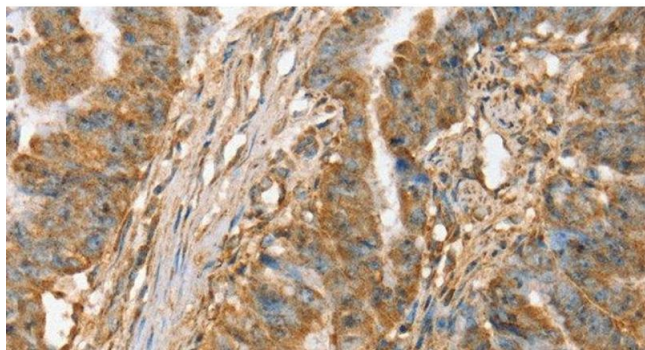
Preservative: Sodium azide

Precaution of Use: This product contains Sodium azide: a POISONOUS AND HAZARDOUS SUBSTANCE which should be handled by trained staff only.

Storage: -20 °C

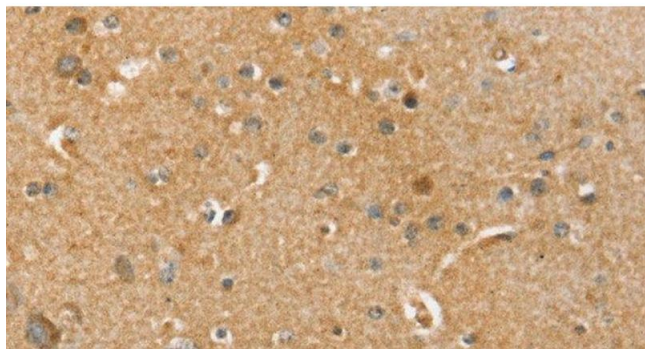
Storage Comment: Store at -20°C. Avoid freeze / thaw cycles.

Images



Immunohistochemistry (Paraffin-embedded Sections)

Image 1. Immunohistochemistry of paraffin-embedded Human esophagus cancer tissue using SLC41A2 Polyclonal Antibody at dilution 1:45



Immunohistochemistry (Paraffin-embedded Sections)

Image 2. Immunohistochemistry of paraffin-embedded Human brain tissue using SLC41A2 Polyclonal Antibody at dilution 1:45