



Datasheet for ABIN7239467
anti-SLIT2 antibody



[Go to Product page](#)

3 Images

Overview

Quantity:	200 µL
Target:	SLIT2
Reactivity:	Human, Rat, Mouse
Host:	Rabbit
Clonality:	Polyclonal
Conjugate:	This SLIT2 antibody is un-conjugated
Application:	Western Blotting (WB), Immunohistochemistry (IHC), ELISA

Product Details

Immunogen:	Synthetic peptide of human SLIT2
Isotype:	IgG
Characteristics:	Polyclonal Antibody
Purification:	Affinity purification

Target Details

Target:	SLIT2
Alternative Name:	SLIT2 (SLIT2 Products)
Background:	Secreted leucine-rich repeat-containing proteins 1-3 (Slit1-3) are secreted glycoproteins that influence axonal guidance and mediate normal neural development by acting as high-affinity signaling ligands for the repulsive guidance receptor, Roundabout (Robo). Within the developing central nervous system (CNS) of different vertebrate systems, Slit proteins are expressed in

Target Details

equivalent regions, suggesting a conserved function among vertebrate homologs. Slit is expressed in the midline of the central nervous system in both vertebrates and invertebrates, where it functions as a regulatory factor of mesodermal cell movement during gastrulation. Slit2 is a short range inhibitory guidance cue for retinal ganglion cell (RGC) axons that may mediate spatial progression of RGCs.

Molecular Weight: 170 kDa

NCBI Accession: [NP_004778](#)

UniProt: [O94813](#)

Pathways: [Regulation of Actin Filament Polymerization](#), [Regulation of Cell Size](#), [Smooth Muscle Cell Migration](#)

Application Details

Application Notes: WB 1:500-1:2000, IHC 1:25-1:100

Restrictions: For Research Use only

Handling

Format: Liquid

Concentration: 0.3 mg/mL

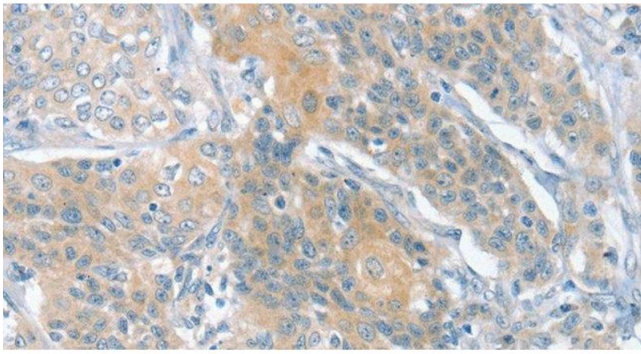
Buffer: PBS with 0.05 % sodium azide and 50 % glycerol, PH7.4

Preservative: Sodium azide

Precaution of Use: This product contains Sodium azide: a POISONOUS AND HAZARDOUS SUBSTANCE which should be handled by trained staff only.

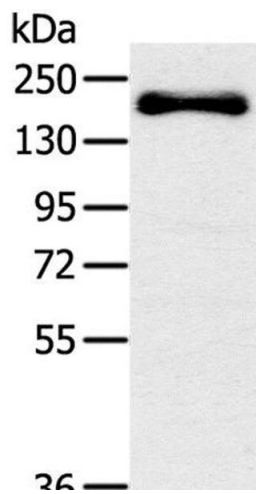
Storage: -20 °C

Storage Comment: Store at -20°C. Avoid freeze / thaw cycles.



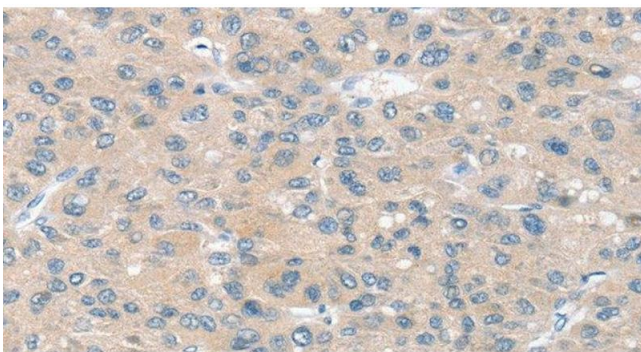
Immunohistochemistry (Paraffin-embedded Sections)

Image 1. Immunohistochemistry of paraffin-embedded Human cervical cancer using SLIT2 Polyclonal Antibody at dilution of 1:30



Western Blotting

Image 2. Western Blot analysis of Mouse bladder tissue using SLIT2 Polyclonal Antibody at dilution of 1:200



Immunohistochemistry (Paraffin-embedded Sections)

Image 3. Immunohistochemistry of paraffin-embedded Human liver cancer using SLIT2 Polyclonal Antibody at dilution of 1:30