

## Datasheet for ABIN7239473 anti-Sorting Nexin 2 antibody



[Go to Product page](#)

### 3 Images

#### Overview

Quantity:	200 µL
Target:	Sorting Nexin 2 (SNX2)
Reactivity:	Human, Mouse
Host:	Rabbit
Clonality:	Polyclonal
Conjugate:	This Sorting Nexin 2 antibody is un-conjugated
Application:	Western Blotting (WB), ELISA, Immunohistochemistry (IHC)

#### Product Details

Immunogen:	Synthetic peptide of human SNX2
Isotype:	IgG
Characteristics:	Polyclonal Antibody
Purification:	Affinity purification

#### Target Details

Target:	Sorting Nexin 2 (SNX2)
Alternative Name:	SNX2 ( <a href="#">SNX2 Products</a> )
Background:	This gene belongs to the sorting nexin family whose members contain the phosphoinositide-binding phox (PX) domain. The encoded protein is a component of the retromer complex which plays a role in protein sorting in the endocytic pathway. This protein may form oligomeric complexes with other family members. Alternate splicing results in multiple transcript variants

## Target Details

of this gene. Pseudogenes associated with this gene are located on chromosomes 1 and 7.

Molecular Weight: 58 kDa

NCBI Accession: [NP\\_003091](#)

UniProt: [O60749](#)

## Application Details

Application Notes: WB 1:500-1:2000, IHC 1:25-1:100

Restrictions: For Research Use only

## Handling

Format: Liquid

Concentration: 1 mg/mL

Buffer: PBS with 0.05 % sodium azide and 50 % glycerol, PH7.4

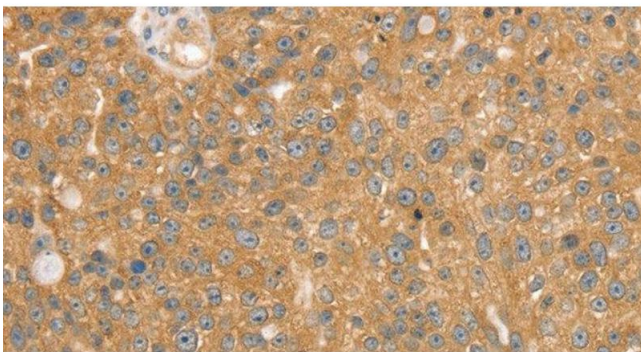
Preservative: Sodium azide

Precaution of Use: This product contains Sodium azide: a POISONOUS AND HAZARDOUS SUBSTANCE which should be handled by trained staff only.

Storage: -20 °C

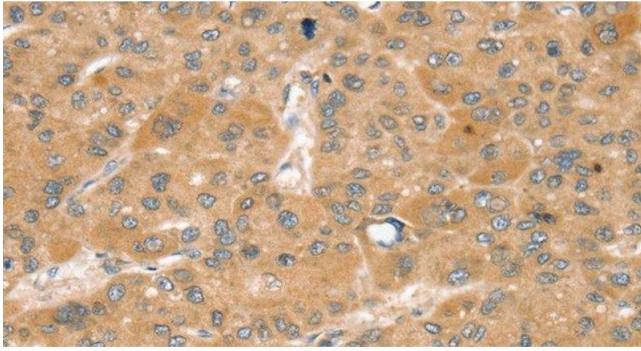
Storage Comment: Store at -20°C. Avoid freeze / thaw cycles.

## Images



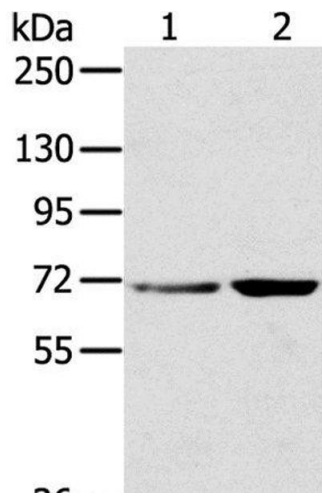
### Immunohistochemistry (Paraffin-embedded Sections)

**Image 1.** Immunohistochemistry of paraffin-embedded Human breast cancer using SNX2 Polyclonal Antibody at dilution of 1:40



### Immunohistochemistry (Paraffin-embedded Sections)

**Image 2.** Immunohistochemistry of paraffin-embedded Human liver cancer using SNX2 Polyclonal Antibody at dilution of 1:40



### Western Blotting

**Image 3.** Western Blot analysis of Hela and 293T cell using SNX2 Polyclonal Antibody at dilution of 1:300