

Datasheet for ABIN7239479

anti-Sortilin 1 antibody

3 Images

[Go to Product page](#)

Overview

Quantity:	200 µL
Target:	Sortilin 1 (SORT1)
Reactivity:	Human, Rat, Mouse
Host:	Rabbit
Clonality:	Polyclonal
Conjugate:	This Sortilin 1 antibody is un-conjugated
Application:	ELISA, Immunohistochemistry (IHC), Western Blotting (WB)

Product Details

Immunogen:	Synthetic peptide of human SORT1
Isotype:	IgG
Characteristics:	Polyclonal Antibody
Purification:	Affinity purification

Target Details

Target:	Sortilin 1 (SORT1)
Alternative Name:	SORT1 (SORT1 Products)
Background:	This gene encodes a protein that is a multi-ligand type-1 receptor with similarity to the yeast carboxypeptidase Y sorting receptor Vps10 protein. The encoded protein, a trans-Golgi network (TGN) transmembrane protein, binds a number of unrelated ligands that participate in a wide range of cellular processes, however, it lacks the typical features of a signalling receptor. In the

Target Details

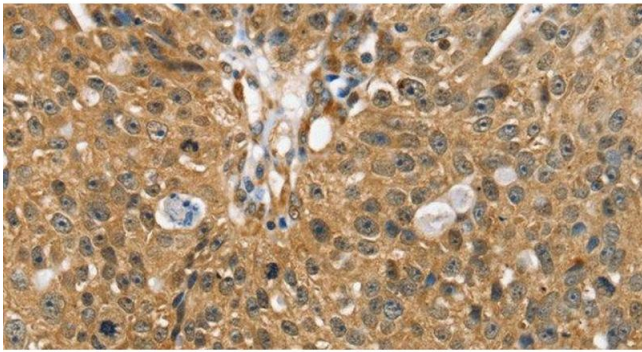
	TGN, furin mediates the activation of the mature binding form. The encoded protein consists of a large luminal domain, a single transmembrane segment and short C-terminal cytoplasmic tail.
Molecular Weight:	92 kDa
NCBI Accession:	NP_002950
UniProt:	Q99523
Pathways:	Neurotrophin Signaling Pathway

Application Details

Application Notes:	WB 1:500-1:2000, IHC 1:35-1:150
Restrictions:	For Research Use only

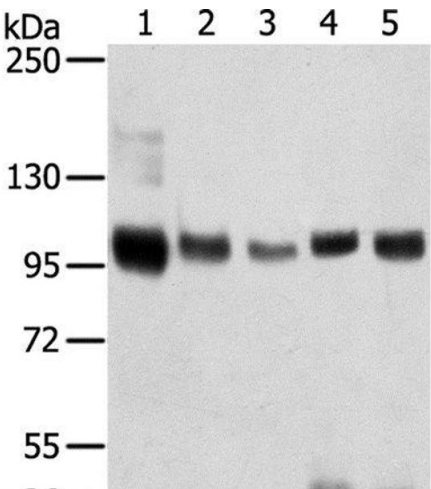
Handling

Format:	Liquid
Concentration:	0.7 mg/mL
Buffer:	PBS with 0.05 % sodium azide and 50 % glycerol, PH7.4
Preservative:	Sodium azide
Precaution of Use:	This product contains Sodium azide: a POISONOUS AND HAZARDOUS SUBSTANCE which should be handled by trained staff only.
Storage:	-20 °C
Storage Comment:	Store at -20°C. Avoid freeze / thaw cycles.



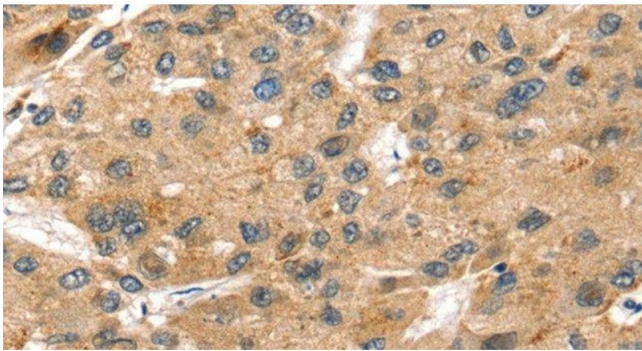
Immunohistochemistry (Paraffin-embedded Sections)

Image 1. Immunohistochemistry of paraffin-embedded Human breast cancer using SORT1 Polyclonal Antibody at dilution of 1:35



Western Blotting

Image 2. Western Blot analysis of Mouse brain and Human brain tissue, Human prostate tissue, Human fat and placenta tissue using SORT1 Polyclonal Antibody at dilution of 1:200



Immunohistochemistry (Paraffin-embedded Sections)

Image 3. Immunohistochemistry of paraffin-embedded Human liver cancer using SORT1 Polyclonal Antibody at dilution of 1:35