



[Go to Product page](#)

Datasheet for ABIN7239503

## anti-TAF10 antibody

### 3 Images

#### Overview

Quantity:	200 µL
Target:	TAF10
Reactivity:	Human, Mouse
Host:	Rabbit
Clonality:	Polyclonal
Conjugate:	This TAF10 antibody is un-conjugated
Application:	Western Blotting (WB), ELISA, Immunohistochemistry (IHC)

#### Product Details

Immunogen:	Synthetic peptide of human TAF10
Isotype:	IgG
Characteristics:	Polyclonal Antibody
Purification:	Affinity purification

#### Target Details

Target:	TAF10
Alternative Name:	TAF10 ( <a href="#">TAF10 Products</a> )
Background:	Initiation of transcription by RNA polymerase II requires the activities of more than 70 polypeptides. The protein that coordinates these activities is transcription factor IID (TFIID), which binds to the core promoter to position the polymerase properly, serves as the scaffold for assembly of the remainder of the transcription complex, and acts as a channel for regulatory

## Target Details

---

signals. TFIID is composed of the TATA-binding protein (TBP) and a group of evolutionarily conserved proteins known as TBP-associated factors or TAFs. TAFs may participate in basal transcription, serve as coactivators, function in promoter recognition or modify general transcription factors (GTFs) to facilitate complex assembly and transcription initiation.

---

Molecular Weight: 22 kDa

---

NCBI Accession: [NP\\_006275](#)

---

UniProt: [Q12962](#)

## Application Details

---

---

Application Notes: WB 1:500-1:2000, IHC 1:25-1:100

---

Restrictions: For Research Use only

## Handling

---

---

Format: Liquid

---

Concentration: 0.6 mg/mL

---

Buffer: PBS with 0.05 % sodium azide and 50 % glycerol, PH7.4

---

Preservative: Sodium azide

---

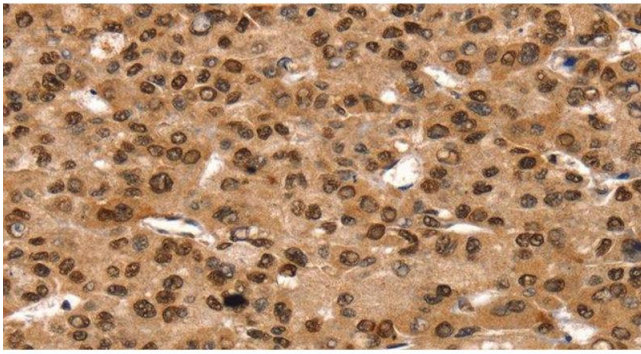
Precaution of Use: This product contains Sodium azide: a POISONOUS AND HAZARDOUS SUBSTANCE which should be handled by trained staff only.

---

Storage: -20 °C

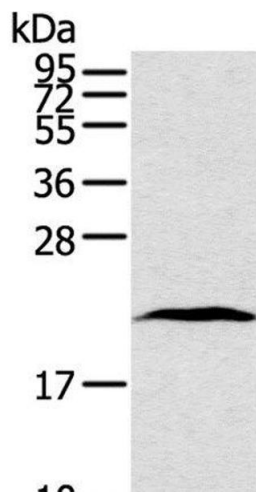
---

Storage Comment: Store at -20°C. Avoid freeze / thaw cycles.



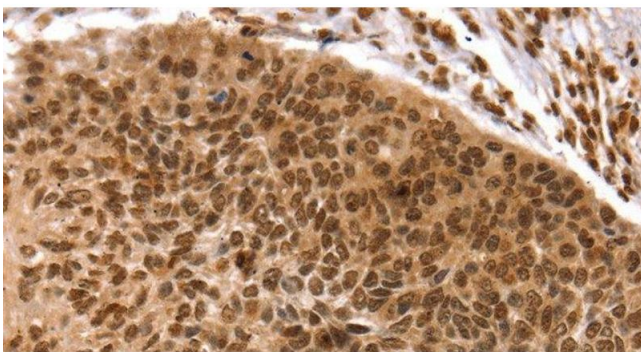
#### Immunohistochemistry (Paraffin-embedded Sections)

**Image 1.** Immunohistochemistry of paraffin-embedded Human liver cancer using TAF10 Polyclonal Antibody at dilution of 1:35



#### Western Blotting

**Image 2.** Western Blot analysis of Human lung cancer tissue using TAF10 Polyclonal Antibody at dilution of 1:400



#### Immunohistochemistry (Paraffin-embedded Sections)

**Image 3.** Immunohistochemistry of paraffin-embedded Human esophagus cancer using TAF10 Polyclonal Antibody at dilution of 1:35