

Datasheet for ABIN7239506

anti-TLN1 antibody**2** Images[Go to Product page](#)

Overview

Quantity:	200 µL
Target:	TLN1
Reactivity:	Human, Mouse
Host:	Rabbit
Clonality:	Polyclonal
Conjugate:	This TLN1 antibody is un-conjugated
Application:	Western Blotting (WB), ELISA, Immunohistochemistry (IHC)

Product Details

Immunogen:	Synthetic peptide of human TLN1
Isotype:	IgG
Characteristics:	Polyclonal Antibody
Purification:	Affinity purification

Target Details

Target:	TLN1
Alternative Name:	TLN1 (TLN1 Products)
Background:	This gene encodes a cytoskeletal protein that is concentrated in areas of cell-substratum and cell-cell contacts. The encoded protein plays a significant role in the assembly of actin filaments and in spreading and migration of various cell types, including fibroblasts and osteoclasts. It codistributes with integrins in the cell surface membrane in order to assist in the

Target Details

attachment of adherent cells to extracellular matrices and of lymphocytes to other cells.

Molecular Weight: 270 kDa

NCBI Accession: [NP_006280](#)

UniProt: [Q9Y490](#)

Pathways: [Cell-Cell Junction Organization](#), [ER-Nucleus Signaling](#), [Maintenance of Protein Location](#)

Application Details

Application Notes: WB 1:500-1:2000, IHC 1:25-1:100

Restrictions: For Research Use only

Handling

Format: Liquid

Concentration: 0.5 mg/mL

Buffer: PBS with 0.05 % sodium azide and 50 % glycerol, PH7.4

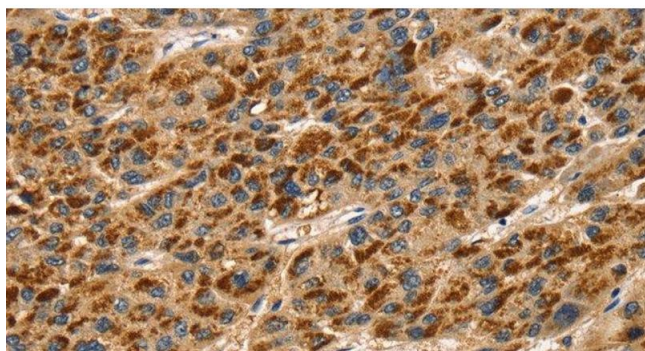
Preservative: Sodium azide

Precaution of Use: This product contains Sodium azide: a POISONOUS AND HAZARDOUS SUBSTANCE which should be handled by trained staff only.

Storage: -20 °C

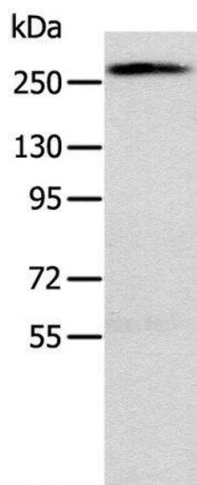
Storage Comment: Store at -20°C. Avoid freeze / thaw cycles.

Images



Immunohistochemistry (Paraffin-embedded Sections)

Image 1. Immunohistochemistry of paraffin-embedded Human liver cancer using TLN1 Polyclonal Antibody at dilution of 1:30



Western Blotting

Image 2. Western Blot analysis of Huvec cell using TLN1 Polyclonal Antibody at dilution of 1:200