

Datasheet for ABIN7239515

anti-TRIM35 antibody[Go to Product page](#)

1 Image

Overview

Quantity:	200 µL
Target:	TRIM35
Reactivity:	Human
Host:	Rabbit
Clonality:	Polyclonal
Conjugate:	This TRIM35 antibody is un-conjugated
Application:	Western Blotting (WB), ELISA

Product Details

Immunogen:	Synthetic peptide of human TRIM35
Isotype:	IgG
Characteristics:	Polyclonal Antibody
Purification:	Affinity purification

Target Details

Target:	TRIM35
Alternative Name:	TRIM35 (TRIM35 Products)
Background:	The protein encoded by this gene is a member of the tripartite motif (TRIM) family. The TRIM motif includes three zinc-binding domains, a RING, a B-box type 1 and a B-box type 2, and a coiled-coil region. The function of this protein has not been identified.

Target Details

Molecular Weight:	57 kDa
NCBI Accession:	NP_741983
UniProt:	Q9UPQ4

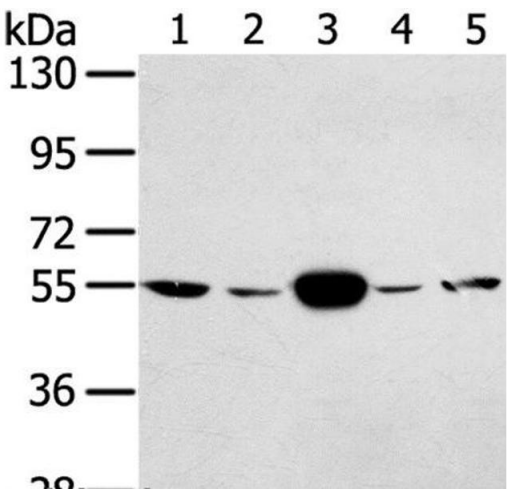
Application Details

Application Notes:	WB 1:500-1:2000
Restrictions:	For Research Use only

Handling

Format:	Liquid
Concentration:	0.3 mg/mL
Buffer:	PBS with 0.05 % sodium azide and 50 % glycerol, PH7.4
Preservative:	Sodium azide
Precaution of Use:	This product contains Sodium azide: a POISONOUS AND HAZARDOUS SUBSTANCE which should be handled by trained staff only.
Storage:	-20 °C
Storage Comment:	Store at -20°C. Avoid freeze / thaw cycles.

Images



Western Blotting

Image 1. Western Blot analysis of Hela and K562 cell, Human fetal muscle tissue, A375 and hepg2 cell using TRIM35 Polyclonal Antibody at dilution of 1:400