



Datasheet for ABIN7239524
anti-TMEFF2 antibody



[Go to Product page](#)

2 Images

Overview

Quantity:	200 µL
Target:	TMEFF2
Reactivity:	Human, Mouse
Host:	Rabbit
Clonality:	Polyclonal
Conjugate:	This TMEFF2 antibody is un-conjugated
Application:	Immunohistochemistry (IHC), ELISA

Product Details

Immunogen:	Synthetic peptide of human TMEFF2
Isotype:	IgG
Characteristics:	Polyclonal Antibody
Purification:	Affinity purification

Target Details

Target:	TMEFF2
Alternative Name:	TMEFF2 (TMEFF2 Products)
Background:	TMEFF2 (transmembrane protein with EGF-like and two follistatin-like domains 2), a gene encoding a plasma membrane protein with two follistatin-like domains and one epidermal growth factor-like domain, had limited normal tissue distribution and was highly overexpressed in prostate cancer. The shedded form up-regulates cancer cell proliferation, probably by

Target Details

promoting ERK1/2 phosphorylation.

NCBI Accession: [NP_057276](#)

UniProt: [Q9UIK5](#)

Application Details

Application Notes: IHC 1:25-1:100

Restrictions: For Research Use only

Handling

Format: Liquid

Concentration: 1.3 mg/mL

Buffer: PBS with 0.05 % sodium azide and 50 % glycerol, PH7.4

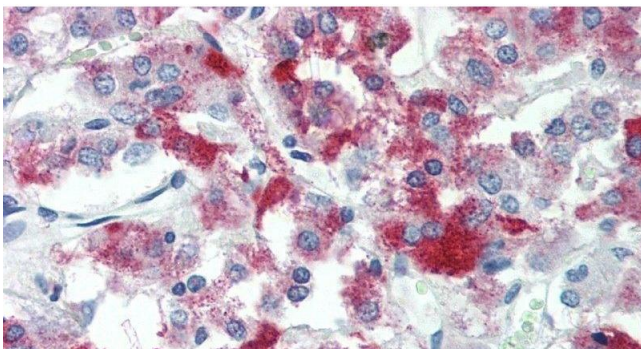
Preservative: Sodium azide

Precaution of Use: This product contains Sodium azide: a POISONOUS AND HAZARDOUS SUBSTANCE which should be handled by trained staff only.

Storage: -20 °C

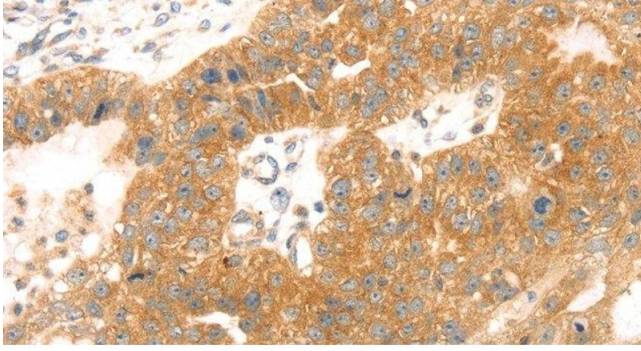
Storage Comment: Store at -20°C. Avoid freeze / thaw cycles.

Images



Immunohistochemistry (Paraffin-embedded Sections)

Image 1. Immunohistochemistry of paraffin-embedded Adrenal tissue using TMEFF2 Polyclonal Antibody at dilution of 1:90 .



Immunohistochemistry (Paraffin-embedded Sections)

Image 2. Immunohistochemistry of paraffin-embedded Human breast cancer tissue using TMEFF2 Polyclonal Antibody at dilution 1:35