



[Go to Product page](#)

Datasheet for ABIN7239548
anti-Cytokeratin 13 antibody

3 Images

Overview

Quantity:	200 µL
Target:	Cytokeratin 13 (KRT13)
Reactivity:	Human, Rat, Mouse
Host:	Rabbit
Clonality:	Polyclonal
Conjugate:	This Cytokeratin 13 antibody is un-conjugated
Application:	Western Blotting (WB), Immunohistochemistry (IHC), ELISA

Product Details

Immunogen:	Recombinant protein of human KRT13
Isotype:	IgG
Characteristics:	Polyclonal Antibody
Purification:	Affinity purification

Target Details

Target:	Cytokeratin 13 (KRT13)
Alternative Name:	CK-13 (KRT13 Products)
Background:	The protein encoded by this gene is a member of the keratin gene family. The keratins are intermediate filament proteins responsible for the structural integrity of epithelial cells and are subdivided into cytokeratins and hair keratins. Most of the type I cytokeratins consist of acidic proteins which are arranged in pairs of heterotypic keratin chains. This type I cytokeratin is

Target Details

paired with keratin 4 and expressed in the suprabasal layers of non-cornified stratified epithelia. Mutations in this gene and keratin 4 have been associated with the autosomal dominant disorder White Sponge Nevus. The type I cytokeratins are clustered in a region of chromosome 17q21.2. Alternative splicing of this gene results in multiple transcript variants, however, not all variants have been described.

Molecular Weight: 50 kDa

UniProt: [P13646](#)

Application Details

Application Notes: WB 1:200-1:1000, IHC 1:50-1:200

Restrictions: For Research Use only

Handling

Format: Liquid

Concentration: 0.2 mg/mL

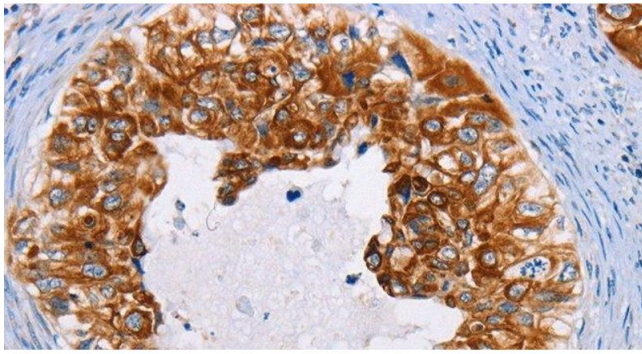
Buffer: PBS with 0.05 % sodium azide and 50 % glycerol, PH7.4

Preservative: Sodium azide

Precaution of Use: This product contains Sodium azide: a POISONOUS AND HAZARDOUS SUBSTANCE which should be handled by trained staff only.

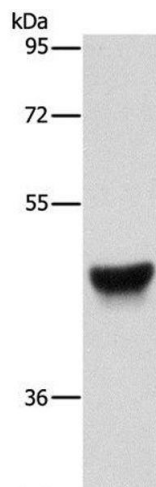
Storage: -20 °C

Storage Comment: Store at -20°C. Avoid freeze / thaw cycles.



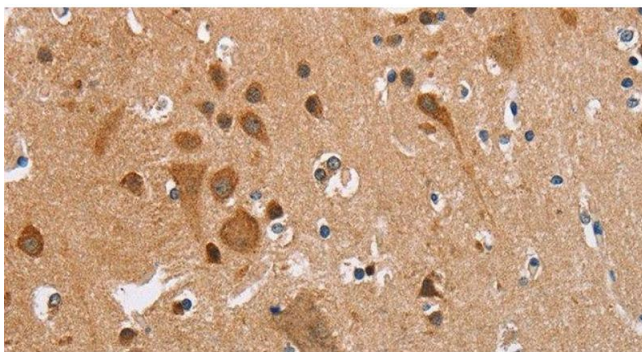
Immunohistochemistry (Paraffin-embedded Sections)

Image 1. Immunohistochemistry of paraffin-embedded Human cervical cancer using CK-13 Polyclonal Antibody at dilution of 1:35



Western Blotting

Image 2. Western Blot analysis of Human esophagus cancer tissue using CK-13 Polyclonal Antibody at dilution of 1:500



Immunohistochemistry (Paraffin-embedded Sections)

Image 3. Immunohistochemistry of paraffin-embedded Human brain using CK-13 Polyclonal Antibody at dilution of 1:35