



[Go to Product page](#)

Datasheet for ABIN7239653

## anti-IL10RB antibody

### 2 Images

#### Overview

Quantity:	200 µL
Target:	IL10RB
Reactivity:	Human
Host:	Rabbit
Clonality:	Polyclonal
Conjugate:	This IL10RB antibody is un-conjugated
Application:	Immunohistochemistry (IHC), ELISA

#### Product Details

Immunogen:	Recombinant protein of human IL10RB
Isotype:	IgG
Characteristics:	Polyclonal Antibody
Purification:	Affinity purification

#### Target Details

Target:	IL10RB
Alternative Name:	IL10RB ( <a href="#">IL10RB Products</a> )
Background:	The protein encoded by this gene belongs to the cytokine receptor family. It is an accessory chain essential for the active interleukin 10 receptor complex. Coexpression of this and IL10RA proteins has been shown to be required for IL10-induced signal transduction. This gene and three other interferon receptor genes, IFAR2, IFNAR1, and IFNGR2, form a class II cytokine

## Target Details

receptor gene cluster located in a small region on chromosome 21.

UniProt: [Q08334](#)

## Application Details

Application Notes: IHC 1:50-1:200

Restrictions: For Research Use only

## Handling

Format: Liquid

Concentration: 0.7 mg/mL

Buffer: PBS with 0.05 % sodium azide and 50 % glycerol, PH7.4

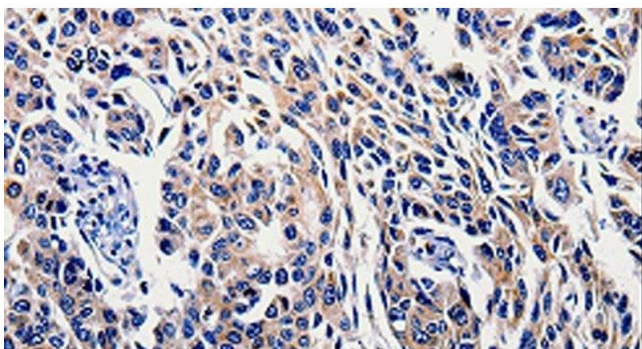
Preservative: Sodium azide

Precaution of Use: This product contains Sodium azide: a POISONOUS AND HAZARDOUS SUBSTANCE which should be handled by trained staff only.

Storage: -20 °C

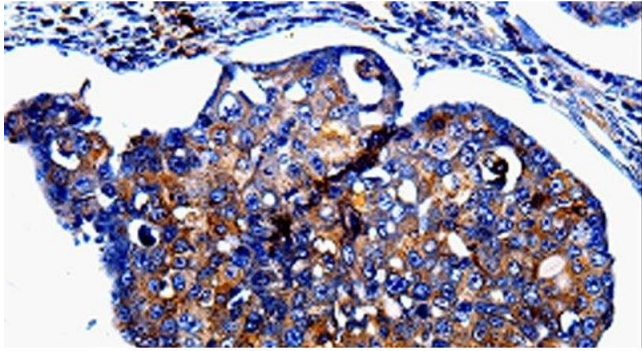
Storage Comment: Store at -20°C. Avoid freeze / thaw cycles.

## Images



### Immunohistochemistry (Paraffin-embedded Sections)

**Image 1.** Immunohistochemistry of paraffin-embedded Human lung cancer tissue using IL10RB Polyclonal Antibody at dilution 1:60



### Immunohistochemistry (Paraffin-embedded Sections)

**Image 2.** Immunohistochemistry of paraffin-embedded Human breast cancer tissue using IL10RB Polyclonal Antibody at dilution 1:60