



Datasheet for ABIN7239728
anti-ATP4b antibody



[Go to Product page](#)

2 Images

Overview

Quantity:	200 µL
Target:	ATP4b
Reactivity:	Human, Mouse, Rat
Host:	Rabbit
Clonality:	Polyclonal
Conjugate:	This ATP4b antibody is un-conjugated
Application:	ELISA, Immunohistochemistry (IHC)

Product Details

Immunogen:	Recombinant protein of human ATP4B
Isotype:	IgG
Characteristics:	Polyclonal Antibody
Purification:	Affinity purification

Target Details

Target:	ATP4b
Alternative Name:	ATP4B (ATP4b Products)
Background:	The protein encoded by this gene belongs to a family of P-type cation-transporting ATPases. The gastric H ⁺ , K ⁺ -ATPase is a heterodimer consisting of a high molecular weight catalytic alpha subunit and a smaller but heavily glycosylated beta subunit. This enzyme is a proton pump that catalyzes the hydrolysis of ATP coupled with the exchange of H ⁽⁺⁾ and K ⁽⁺⁾ ions

Target Details

across the plasma membrane. It is also responsible for gastric acid secretion. This gene encodes the beta subunit of the gastric H⁺, K⁺-ATPase.

UniProt: [P51164](#)

Pathways: [Proton Transport](#)

Application Details

Application Notes: IHC 1:25-1:100

Restrictions: For Research Use only

Handling

Format: Liquid

Concentration: 0.6 mg/mL

Buffer: PBS with 0.05 % sodium azide and 50 % glycerol, PH7.4

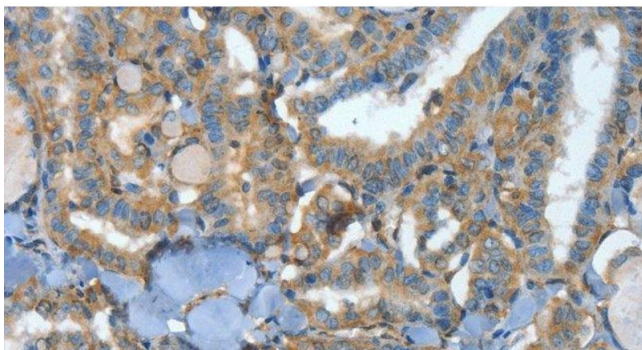
Preservative: Sodium azide

Precaution of Use: This product contains Sodium azide: a POISONOUS AND HAZARDOUS SUBSTANCE which should be handled by trained staff only.

Storage: -20 °C

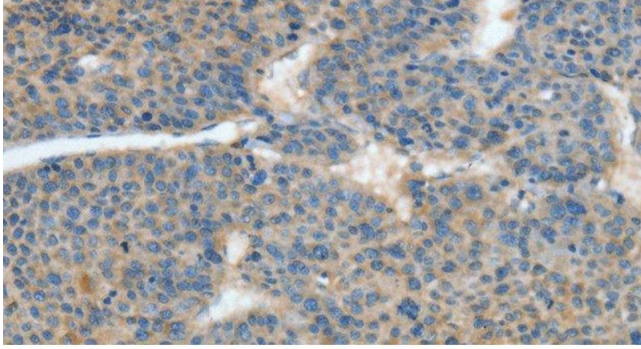
Storage Comment: Store at -20°C. Avoid freeze / thaw cycles.

Images



Immunohistochemistry (Paraffin-embedded Sections)

Image 1. Immunohistochemistry of paraffin-embedded Human thyroid cancer tissue using ATP4B Polyclonal Antibody at dilution 1:40



Immunohistochemistry (Paraffin-embedded Sections)

Image 2. Immunohistochemistry of paraffin-embedded Human liver cancer tissue using ATP4B Polyclonal Antibody at dilution 1:40