

Datasheet for ABIN7239743
anti-Caldesmon antibody

3 Images

[Go to Product page](#)

Overview

Quantity:	200 µL
Target:	Caldesmon (CALD1)
Reactivity:	Human, Rat
Host:	Rabbit
Clonality:	Polyclonal
Conjugate:	This Caldesmon antibody is un-conjugated
Application:	Western Blotting (WB), Immunohistochemistry (IHC), ELISA

Product Details

Immunogen:	Recombinant protein of human Caldesmo
Isotype:	IgG
Characteristics:	Polyclonal Antibody
Purification:	Affinity purification

Target Details

Target:	Caldesmon (CALD1)
Alternative Name:	Caldesmon (CALD1 Products)
Background:	This gene encodes a calmodulin- and actin-binding protein that plays an essential role in the regulation of smooth muscle and nonmuscle contraction. The conserved domain of this protein possesses the binding activities to Ca(2+)-calmodulin, actin, tropomyosin, myosin, and phospholipids. This protein is a potent inhibitor of the actin-tropomyosin activated myosin

Target Details

MgATPase, and serves as a mediating factor for Ca(2+)-dependent inhibition of smooth muscle contraction. Alternative splicing of this gene results in multiple transcript variants encoding distinct isoforms.

Molecular Weight: 63 kDa

UniProt: [Q05682](#)

Pathways: [Myometrial Relaxation and Contraction](#)

Application Details

Application Notes: WB 1:1000-1:5000, IHC 1:50-1:150

Restrictions: For Research Use only

Handling

Format: Liquid

Concentration: 0.4 mg/mL

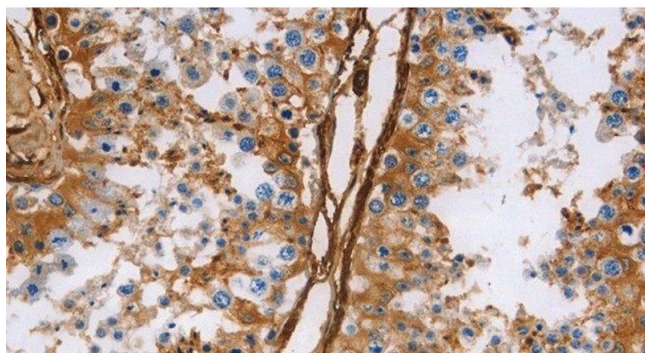
Buffer: PBS with 0.05 % sodium azide and 50 % glycerol, PH7.4

Preservative: Sodium azide

Precaution of Use: This product contains Sodium azide: a POISONOUS AND HAZARDOUS SUBSTANCE which should be handled by trained staff only.

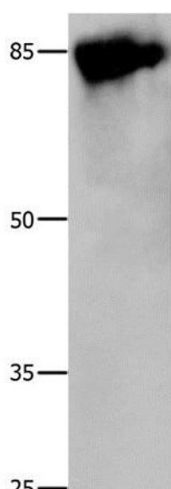
Storage: -20 °C

Storage Comment: Store at -20°C. Avoid freeze / thaw cycles.



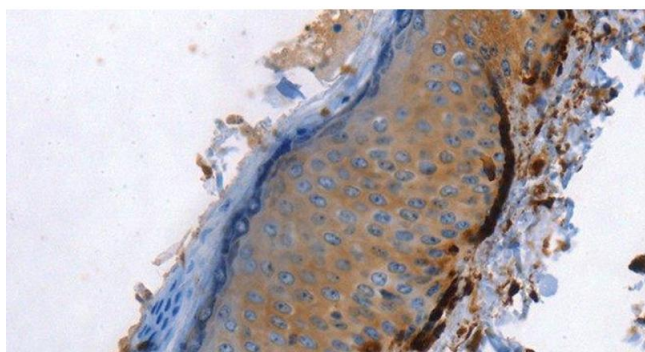
Immunohistochemistry (Paraffin-embedded Sections)

Image 1. Immunohistochemistry of paraffin-embedded Human testis using Caldesmon Polyclonal Antibody at dilution of 1:40



Western Blotting

Image 2. Western Blot analysis of 293T cell using Caldesmon Polyclonal Antibody at dilution of 1:800



Immunohistochemistry (Paraffin-embedded Sections)

Image 3. Immunohistochemistry of paraffin-embedded Human skin using Caldesmon Polyclonal Antibody at dilution of 1:40