

Datasheet for ABIN7239749  
**anti-Calpain S1 antibody**

## 3 Images

[Go to Product page](#)

## Overview

Quantity:	200 µL
Target:	Calpain S1 (CAPNS1)
Reactivity:	Human, Mouse, Rat
Host:	Rabbit
Clonality:	Polyclonal
Conjugate:	This Calpain S1 antibody is un-conjugated
Application:	Western Blotting (WB), ELISA, Immunohistochemistry (IHC)

## Product Details

Immunogen:	Recombinant protein of human CAPNS1
Isotype:	IgG
Characteristics:	Polyclonal Antibody
Purification:	Affinity purification

## Target Details

Target:	Calpain S1 (CAPNS1)
Alternative Name:	CAPNS1 ( <a href="#">CAPNS1 Products</a> )
Background:	<p>Calpains are a ubiquitous, well-conserved family of calcium-dependent, cysteine proteases. Calpain families have been implicated in neurodegenerative processes, as their activation can be triggered by calcium influx and oxidative stress. Calpain I and II are heterodimeric with distinct large subunits associated with common small subunits, all of which are encoded by</p>

## Target Details

different genes. This gene encodes a small subunit common to both calpain I and II and is associated with myotonic dystrophy. Two transcript variants encoding the same protein have been identified for this gene.

Molecular Weight: 28 kDa

UniProt: [P04632](#)

Pathways: [Apoptosis](#)

## Application Details

Application Notes: WB 1:500-1:2000, IHC 1:50-1:200

Restrictions: For Research Use only

## Handling

Format: Liquid

Concentration: 0.3 mg/mL

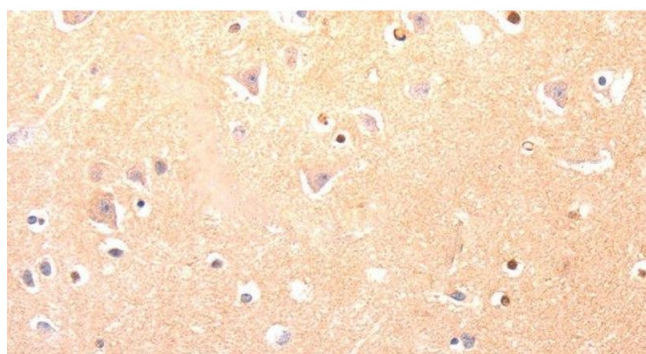
Buffer: PBS with 0.05 % sodium azide and 50 % glycerol, PH7.4

Preservative: Sodium azide

Precaution of Use: This product contains Sodium azide: a POISONOUS AND HAZARDOUS SUBSTANCE which should be handled by trained staff only.

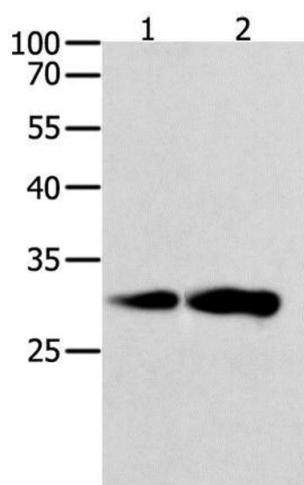
Storage: -20 °C

Storage Comment: Store at -20°C. Avoid freeze / thaw cycles.



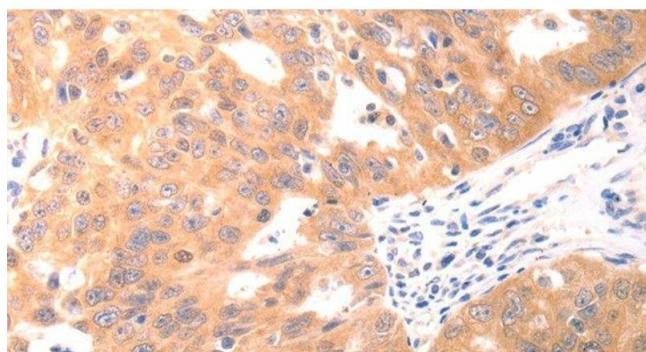
#### Immunohistochemistry (Paraffin-embedded Sections)

**Image 1.** Immunohistochemistry of paraffin-embedded Human brain using CAPNS1 Polyclonal Antibody at dilution of 1:60



#### Western Blotting

**Image 2.** Western Blot analysis of K562 and NIH/3T3 cell using CAPNS1 Polyclonal Antibody at dilution of 1:800



#### Immunohistochemistry (Paraffin-embedded Sections)

**Image 3.** Immunohistochemistry of paraffin-embedded Human ovarian cancer using CAPNS1 Polyclonal Antibody at dilution of 1:60