



## Datasheet for ABIN7239761 anti-CA14 antibody



[Go to Product page](#)

### 1 Image

#### Overview

Quantity:	200 µL
Target:	CA14
Reactivity:	Human, Mouse
Host:	Rabbit
Clonality:	Polyclonal
Conjugate:	This CA14 antibody is un-conjugated
Application:	Western Blotting (WB), ELISA

#### Product Details

Immunogen:	Recombinant protein of human CA14
Isotype:	IgG
Characteristics:	Polyclonal Antibody
Purification:	Affinity purification

#### Target Details

Target:	CA14
Alternative Name:	CA14 ( <a href="#">CA14 Products</a> )
Background:	Carbonic anhydrases (CAs) are a large family of zinc metalloenzymes that catalyze the reversible hydration of carbon dioxide. They participate in a variety of biological processes, including respiration, calcification, acid-base balance, bone resorption, and the formation of aqueous humor, cerebrospinal fluid, saliva, and gastric acid. They show extensive diversity in

## Target Details

---

tissue distribution and in their subcellular localization. CA XIV is predicted to be a type I membrane protein and shares highest sequence similarity with the other transmembrane CA isoform, CA XII, however, they have different patterns of tissue-specific expression and thus may play different physiologic roles.

---

Molecular Weight: 38 kDa

---

UniProt: [Q9ULX7](#)

## Application Details

---

---

Application Notes: WB 1:500-1:2000

---

Restrictions: For Research Use only

## Handling

---

---

Format: Liquid

---

Concentration: 0.3 mg/mL

---

Buffer: PBS with 0.05 % sodium azide and 50 % glycerol, PH7.4

---

Preservative: Sodium azide

---

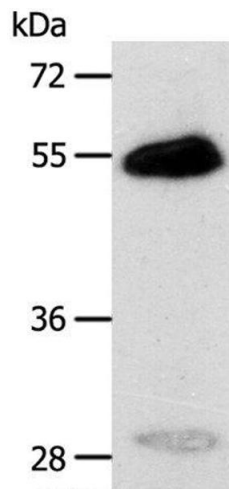
Precaution of Use: This product contains Sodium azide: a POISONOUS AND HAZARDOUS SUBSTANCE which should be handled by trained staff only.

---

Storage: -20 °C

---

Storage Comment: Store at -20°C. Avoid freeze / thaw cycles.



#### Western Blotting

**Image 1.** Western Blot analysis of Human liver cancer tissue using CA14 Polyclonal Antibody at dilution of 1:400